



[Go to Product page](#)

Datasheet for ABIN657388
anti-MID1 antibody (C-Term)

1 Image

Overview

Quantity:	400 µL
Target:	MID1
Binding Specificity:	AA 575-603, C-Term
Reactivity:	Human
Host:	Rabbit
Clonality:	Polyclonal
Application:	Western Blotting (WB)

Product Details

Immunogen:	This MID1 antibody is generated from rabbits immunized with a KLH conjugated synthetic peptide between 575-603 amino acids from the C-terminal region of human MID1.
Clone:	RB33237
Isotype:	IgG
Purification:	This antibody is purified through a protein A column, followed by peptide affinity purification.

Target Details

Target:	MID1
Alternative Name:	MID1 (MID1 Products)
Background:	The protein encoded by this gene is a member of the tripartite motif (TRIM) family, also known as the 'RING-B box-coiled coil' (RBCC) subgroup of RING finger proteins. The TRIM motif includes three zinc-binding domains, a RING, a B-box type 1 and a B-box type 2, and a coiled-

Target Details

coil region. This protein forms homodimers which associate with microtubules in the cytoplasm. The protein is likely involved in the formation of multiprotein structures acting as anchor points to microtubules. Mutations in this gene have been associated with the X-linked form of Opitz syndrome, which is characterized by midline abnormalities such as cleft lip, laryngeal cleft, heart defects, hypospadias, and agenesis of the corpus callosum. This gene was also the first example of a gene subject to X inactivation in human while escaping it in mouse. Multiple different transcript variants are generated by alternate splicing, however, the full-length nature of some of the variants has not been determined.

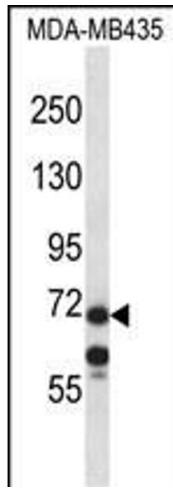
Molecular Weight:	75251
Gene ID:	4281
NCBI Accession:	NP_000372 , NP_001092094 , NP_001180206 , NP_001180207 , NP_001180208 , NP_001180209 , NP_001180210 , NP_150632
UniProt:	O15344

Application Details

Application Notes:	WB: 1:1000
Restrictions:	For Research Use only

Handling

Format:	Liquid
Buffer:	Purified polyclonal antibody supplied in PBS with 0.09 % (W/V) sodium azide.
Preservative:	Sodium azide
Precaution of Use:	This product contains Sodium azide: a POISONOUS AND HAZARDOUS SUBSTANCE which should be handled by trained staff only.
Storage:	4 °C, -20 °C
Storage Comment:	MID1 Antibody (C-term) can be refrigerated at 2-8 °C for up to 6 months. For long term storage, place the at -20 °C.
Expiry Date:	6 months



Western Blotting

Image 1. MID1 Antibody (C-term) (ABIN657388 and ABIN2846429) western blot analysis in MDA-M cell line lysates (35 µg/lane). This demonstrates the MID1 antibody detected the MID1 protein (arrow).