

Datasheet for ABIN657391
anti-p21 antibody (C-Term)

4 Images

[Go to Product page](#)

Overview

Quantity:	400 µL
Target:	p21 (CDKN1A)
Binding Specificity:	AA 117-146, C-Term
Reactivity:	Human, Mouse
Host:	Rabbit
Clonality:	Polyclonal
Conjugate:	This p21 antibody is un-conjugated
Application:	Western Blotting (WB), Immunofluorescence (IF), Immunohistochemistry (Paraffin-embedded Sections) (IHC (p))

Product Details

Immunogen:	This CDKN1A antibody is generated from rabbits immunized with a KLH conjugated synthetic peptide between 117-146 amino acids from the C-terminal region of human CDKN1A.
Clone:	RB33282
Isotype:	Ig Fraction
Purification:	This antibody is purified through a protein A column, followed by peptide affinity purification.

Target Details

Target:	p21 (CDKN1A)
Alternative Name:	CDKN1A (CDKN1A Products)

Target Details

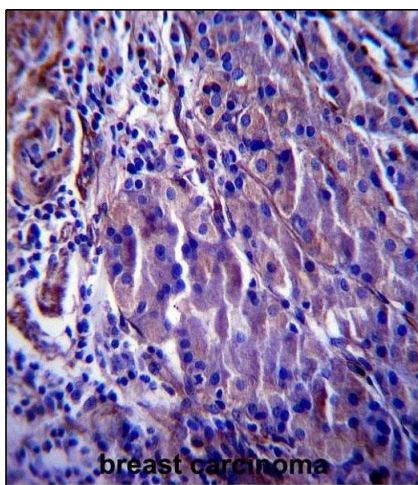
Background:	<p>This gene encodes a potent cyclin-dependent kinase inhibitor. The encoded protein binds to and inhibits the activity of cyclin-CDK2 or -CDK4 complexes, and thus functions as a regulator of cell cycle progression at G1. The expression of this gene is tightly controlled by the tumor suppressor protein p53, through which this protein mediates the p53-dependent cell cycle G1 phase arrest in response to a variety of stress stimuli. This protein can interact with proliferating cell nuclear antigen (PCNA), a DNA polymerase accessory factor, and plays a regulatory role in S phase DNA replication and DNA damage repair. This protein was reported to be specifically cleaved by CASP3-like caspases, which thus leads to a dramatic activation of CDK2, and may be instrumental in the execution of apoptosis following caspase activation. Multiple alternatively spliced variants have been found for this gene.</p>
Molecular Weight:	18119
Gene ID:	1026
NCBI Accession:	NP_000380 , NP_001207706 , NP_001207707 , NP_510867
UniProt:	P38936
Pathways:	p53 Signaling , PI3K-Akt Signaling , Cell Division Cycle , AMPK Signaling , Fc-epsilon Receptor Signaling Pathway , EGFR Signaling Pathway , Neurotrophin Signaling Pathway , Mitotic G1-G1/S Phases , DNA Replication , Hepatitis C , Synthesis of DNA , Autophagy

Application Details

Application Notes:	IF: 1:10~50. WB: 1:1000. WB: 1:1000. IHC-P: 1:10~50
Restrictions:	For Research Use only

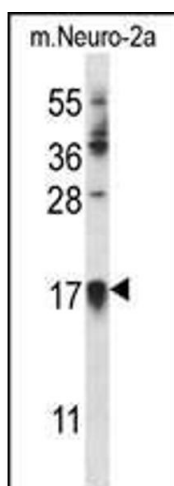
Handling

Format:	Liquid
Buffer:	Purified polyclonal antibody supplied in PBS with 0.09 % (W/V) sodium azide.
Preservative:	Sodium azide
Precaution of Use:	This product contains Sodium azide: a POISONOUS AND HAZARDOUS SUBSTANCE which should be handled by trained staff only.
Storage:	4 °C,-20 °C
Storage Comment:	CDKN1A Antibody (C-term) can be refrigerated at 2-8 °C for up to 6 months. For long term storage, place the at -20 °C.



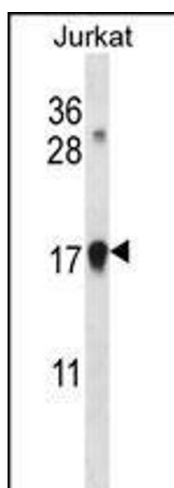
Immunohistochemistry (Paraffin-embedded Sections)

Image 1. CDKN1A Antibody (C-term) (ABIN657391 and ABIN2846432) immunohistochemistry analysis in formalin fixed and paraffin embedded human breast carcinoma followed by peroxidase conjugation of the secondary antibody and DAB staining. This data demonstrates the use of CDKN1A Antibody (C-term) for immunohistochemistry. Clinical relevance has not been evaluated.



Western Blotting

Image 2. CDKN1A Antibody (C-term) (ABIN657391 and ABIN2846432) western blot analysis in mouse Neuro-2a cell line lysates (35 µg/lane). This demonstrates the CDKN1A antibody detected the CDKN1A protein (arrow).



Western Blotting

Image 3. CDKN1A Antibody (C-term) (ABIN657391 and ABIN2846432) western blot analysis in Jurkat cell line lysates (35 µg/lane). This demonstrates the CDKN1A antibody detected the CDKN1A protein (arrow).

Please check the [product details page](#) for more images. Overall 4 images are available for ABIN657391.