



Datasheet for ABIN657395
anti-NPC1 antibody (AA 591-620)



[Go to Product page](#)

3 Images

Overview

Quantity:	400 µL
Target:	NPC1
Binding Specificity:	AA 591-620
Reactivity:	Human
Host:	Rabbit
Clonality:	Polyclonal
Conjugate:	This NPC1 antibody is un-conjugated
Application:	Western Blotting (WB), Immunofluorescence (IF), Immunohistochemistry (Paraffin-embedded Sections) (IHC (p))

Product Details

Immunogen:	This NPC1 antibody is generated from rabbits immunized with a KLH conjugated synthetic peptide between 591-620 amino acids from the Central region of human NPC1.
Clone:	RB33297
Isotype:	Ig Fraction
Purification:	This antibody is purified through a protein A column, followed by peptide affinity purification.

Target Details

Target:	NPC1
Alternative Name:	NPC1 (NPC1 Products)

Target Details

Background: This gene encodes a large protein that resides in the limiting membrane of endosomes and lysosomes and mediates intracellular cholesterol trafficking via binding of cholesterol to its N-terminal domain. It is predicted to have a cytoplasmic C-terminus, 13 transmembrane domains, and 3 large loops in the lumen of the endosome - the last loop being at the N-terminus. This protein transports low-density lipoproteins to late endosomal/lysosomal compartments where they are hydrolyzed and released as free cholesterol. Defects in this gene cause Niemann-Pick type C disease, a rare autosomal recessive neurodegenerative disorder characterized by over accumulation of cholesterol and glycosphingolipids in late endosomal/lysosomal compartments.

Molecular Weight: 142167

Gene ID: 4864

NCBI Accession: [NP_000262](#)

UniProt: [O15118](#)

Application Details

Application Notes: IF: 1:10~50. WB: 1:1000. IHC-P: 1:10~50

Restrictions: For Research Use only

Handling

Format: Liquid

Buffer: Purified polyclonal antibody supplied in PBS with 0.09 % (W/V) sodium azide.

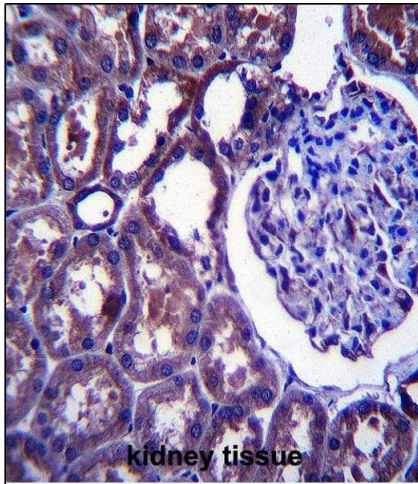
Preservative: Sodium azide

Precaution of Use: This product contains Sodium azide: a POISONOUS AND HAZARDOUS SUBSTANCE which should be handled by trained staff only.

Storage: 4 °C, -20 °C

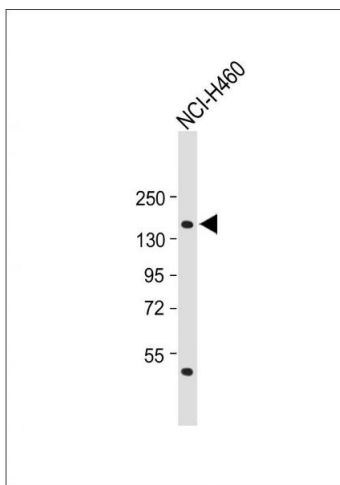
Storage Comment: NPC1 Antibody (Center) can be refrigerated at 2-8 °C for up to 6 months. For long term storage, place the at -20 °C.

Expiry Date: 6 months



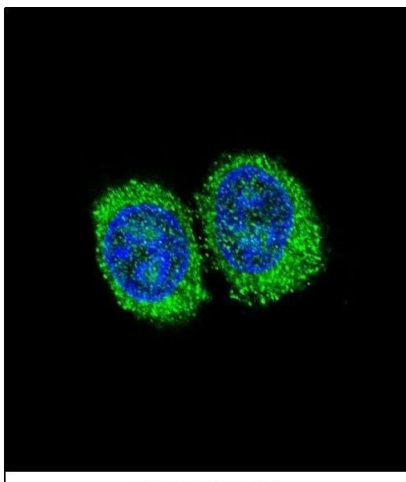
Immunohistochemistry (Paraffin-embedded Sections)

Image 1. NPC1 Antibody (Center) (ABIN657395 and ABIN2846435) immunohistochemistry analysis in formalin fixed and paraffin embedded human kidney tissue followed by peroxidase conjugation of the secondary antibody and DAB staining. This data demonstrates the use of NPC1 Antibody (Center) for immunohistochemistry. Clinical relevance has not been evaluated.



Western Blotting

Image 2. Anti-NPC1 Antibody (Center) at 1:1000 dilution + NCI- whole cell lysate Lysates/proteins at 20 µg per lane. Secondary Goat Anti-Rabbit IgG, (H+L), Peroxidase conjugated at 1/10000 dilution. Predicted band size : 142 kDa Blocking/Dilution buffer: 5 % NFDm/TBST.



Immunofluorescence

Image 3. Confocal immunofluorescent analysis of NPC1 Antibody (Center) (ABIN657395 and ABIN2846435) with 293 cell followed by Alexa Fluor 488-conjugated goat anti-rabbit IgG (green). DAPI was used to stain the cell nuclear (blue).