

Datasheet for ABIN657397
anti-SFRS2B antibody (N-Term)[Go to Product page](#)

2 Images

Overview

Quantity:	400 µL
Target:	SFRS2B (SRSF8)
Binding Specificity:	AA 45-73, N-Term
Reactivity:	Human, Mouse
Host:	Rabbit
Clonality:	Polyclonal
Application:	Western Blotting (WB)

Product Details

Immunogen:	This SFRS2B antibody is generated from rabbits immunized with a KLH conjugated synthetic peptide between 45-73 amino acids from the N-terminal region of human SFRS2B.
Clone:	RB33317
Isotype:	Ig Fraction
Purification:	This antibody is purified through a protein A column, followed by peptide affinity purification.

Target Details

Target:	SFRS2B (SRSF8)
Alternative Name:	SFRS2B (SRSF8 Products)
Background:	The SR (serine/arginine-rich) family contains a number of phosphoproteins that function as essential and alternative splicing factors. The SR family of proteins is characterized by the presence of a ribonucleoprotein (RNP)-type RNA binding motif and a carboxyl-terminal arginine-

Target Details

serine-rich (RS) domain. The protein encoded by this gene is a member of the SR family and functions as an essential splicing factor in vitro. This gene is thought to be an expressed PR264/SC35 retropseudogene.

Molecular Weight: 32288

Gene ID: 10929

NCBI Accession: [NP_115285](#)

UniProt: [Q9BRL6](#)

Application Details

Application Notes: WB: 1:1000. WB: 1:1000

Restrictions: For Research Use only

Handling

Format: Liquid

Buffer: Purified polyclonal antibody supplied in PBS with 0.09 % (W/V) sodium azide.

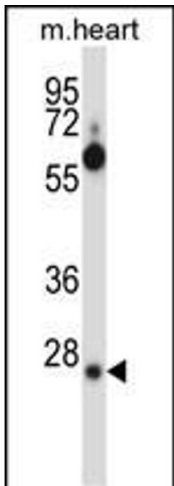
Preservative: Sodium azide

Precaution of Use: This product contains Sodium azide: a POISONOUS AND HAZARDOUS SUBSTANCE which should be handled by trained staff only.

Storage: 4 °C, -20 °C

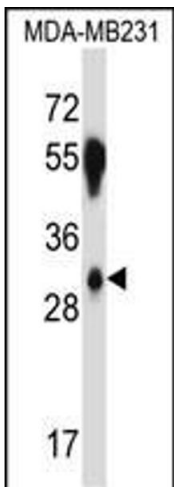
Storage Comment: SFRS2B Antibody (N-term) can be refrigerated at 2-8 °C for up to 6 months. For long term storage, place the at -20 °C.

Expiry Date: 6 months



Western Blotting

Image 1. SFRS2B Antibody (N-term) (ABIN657397 and ABIN2846437) western blot analysis in mouse heart tissue lysates (35 µg/lane). This demonstrates the SFRS2B antibody detected the SFRS2B protein (arrow).



Western Blotting

Image 2. SFRS2B Antibody (N-term) (ABIN657397 and ABIN2846437) western blot analysis in MDA-M cell line lysates (35 µg/lane). This demonstrates the SFRS2B antibody detected the SFRS2B protein (arrow).