



[Go to Product page](#)

Datasheet for ABIN657398  
**anti-TBCC antibody (N-Term)**

1 Image

Overview

Quantity:	400 µL
Target:	TBCC
Binding Specificity:	AA 20-49, N-Term
Reactivity:	Mouse
Host:	Rabbit
Clonality:	Polyclonal
Conjugate:	This TBCC antibody is un-conjugated
Application:	Western Blotting (WB)

Product Details

Immunogen:	This TBCC antibody is generated from rabbits immunized with a KLH conjugated synthetic peptide between 20-49 amino acids from the N-terminal region of human TBCC.
Clone:	RB33319
Isotype:	Ig Fraction
Purification:	This antibody is purified through a protein A column, followed by peptide affinity purification.

Target Details

Target:	TBCC
Alternative Name:	TBCC ( <a href="#">TBCC Products</a> )
Background:	Cofactor C is one of four proteins (cofactors A, D, E, and C) involved in the pathway leading to

## Target Details

---

correctly folded beta-tubulin from folding intermediates. Cofactors A and D are believed to play a role in capturing and stabilizing beta-tubulin intermediates in a quasi-native confirmation. Cofactor E binds to the cofactor D/beta-tubulin complex, interaction with cofactor C then causes the release of beta-tubulin polypeptides that are committed to the native state.

Molecular Weight: 39248

Gene ID: 6903

NCBI Accession: [NP\\_003183](#)

UniProt: [Q15814](#)

## Application Details

---

Application Notes: WB: 1:1000

Restrictions: For Research Use only

## Handling

---

Format: Liquid

Buffer: Purified polyclonal antibody supplied in PBS with 0.09 % (W/V) sodium azide.

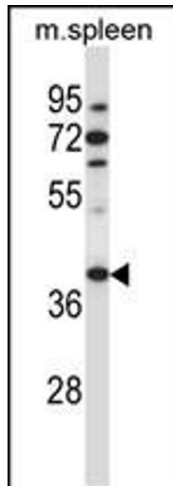
Preservative: Sodium azide

Precaution of Use: This product contains Sodium azide: a POISONOUS AND HAZARDOUS SUBSTANCE which should be handled by trained staff only.

Storage: 4 °C,-20 °C

Storage Comment: TBCC Antibody (N-term ) can be refrigerated at 2-8 °C for up to 6 months. For long term storage, place the at -20 °C.

Expiry Date: 6 months



### Western Blotting

**Image 1.** TBCC Antibody (N-term ) (ABIN657398 and ABIN2846438) western blot analysis in mouse spleen tissue lysates (35 µg/lane). This demonstrates the TBCC antibody detected the TBCC protein (arrow).