



[Go to Product page](#)

Datasheet for ABIN657402
anti-SDF2L1 antibody (C-Term)

4 Images

Overview

Quantity:	400 µL
Target:	SDF2L1
Binding Specificity:	AA 160-189, C-Term
Reactivity:	Human, Mouse
Host:	Rabbit
Clonality:	Polyclonal
Conjugate:	This SDF2L1 antibody is un-conjugated
Application:	Western Blotting (WB), Flow Cytometry (FACS), Immunohistochemistry (Paraffin-embedded Sections) (IHC (p))

Product Details

Immunogen:	This SDF2L1 antibody is generated from rabbits immunized with a KLH conjugated synthetic peptide between 160-189 amino acids from the C-terminal region of human SDF2L1.
Clone:	RB33345
Isotype:	Ig Fraction
Predicted Reactivity:	B
Purification:	This antibody is purified through a protein A column, followed by peptide affinity purification.

Target Details

Target:	SDF2L1
---------	--------

Target Details

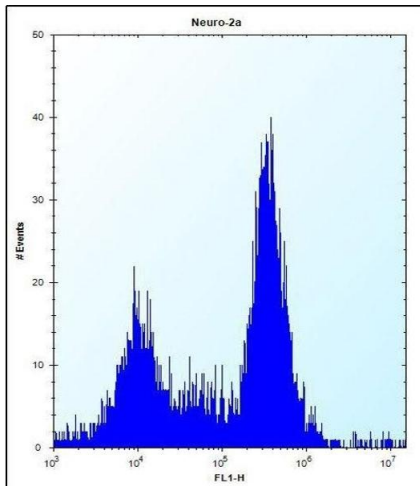
Alternative Name:	SDF2L1 (SDF2L1 Products)
Background:	The specific function of the protein remains unknown.
Gene ID:	23753
NCBI Accession:	NP_071327
UniProt:	Q9HCN8

Application Details

Application Notes:	WB: 1:1000. WB: 1:1000. IHC-P: 1:10~50. FC: 1:10~50
Restrictions:	For Research Use only

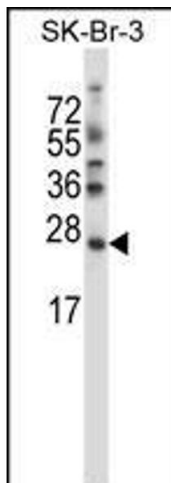
Handling

Format:	Liquid
Buffer:	Purified polyclonal antibody supplied in PBS with 0.09 % (W/V) sodium azide.
Preservative:	Sodium azide
Precaution of Use:	This product contains Sodium azide: a POISONOUS AND HAZARDOUS SUBSTANCE which should be handled by trained staff only.
Storage:	4 °C,-20 °C
Storage Comment:	SDF2L1 Antibody (C-term) can be refrigerated at 2-8 °C for up to 6 months. For long term storage, place the at -20 °C.
Expiry Date:	6 months



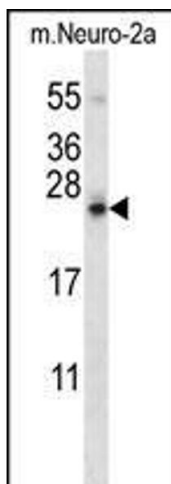
Flow Cytometry

Image 1. SDF2L1 Antibody (C-term) (ABIN657402 and ABIN2846442) flow cytometric analysis of Neuro-2a cells (right histogram) compared to a negative control cell (left histogram). FITC-conjugated donkey-anti-rabbit secondary antibodies were used for the analysis.



Western Blotting

Image 2. SDF2L1 Antibody (C-term) (ABIN657402 and ABIN2846442) western blot analysis in SK-BR-3 cell line lysates (35 µg/lane). This demonstrates the SDF2L1 antibody detected the SDF2L1 protein (arrow).



Western Blotting

Image 3. SDF2L1 Antibody (C-term) (ABIN657402 and ABIN2846442) western blot analysis in mouse Neuro-2a cell line lysates (35 µg/lane). This demonstrates the SDF2L1 antibody detected the SDF2L1 protein (arrow).

Please check the [product details page](#) for more images. Overall 4 images are available for ABIN657402.