

Datasheet for ABIN657403
anti-CCDC22 antibody (C-Term)[Go to Product page](#)

2 Images

Overview

Quantity:	400 µL
Target:	CCDC22
Binding Specificity:	AA 530-558, C-Term
Reactivity:	Human
Host:	Rabbit
Clonality:	Polyclonal
Conjugate:	This CCDC22 antibody is un-conjugated
Application:	Western Blotting (WB), Immunohistochemistry (Paraffin-embedded Sections) (IHC (p))

Product Details

Immunogen:	This CCDC22 antibody is generated from rabbits immunized with a KLH conjugated synthetic peptide between 530-558 amino acids from the C-terminal region of human CCDC22.
Clone:	RB33346
Isotype:	Ig Fraction
Predicted Reactivity:	B, M, Rat
Purification:	This antibody is purified through a protein A column, followed by peptide affinity purification.

Target Details

Target:	CCDC22
Alternative Name:	CCDC22 (CCDC22 Products)

Target Details

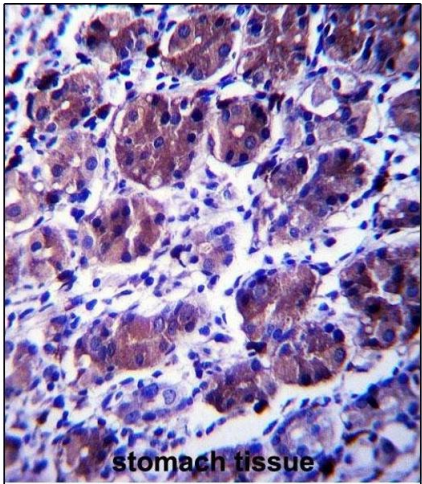
Background:	The specific function of the protein remains unknown.
Molecular Weight:	70756
Gene ID:	28952
NCBI Accession:	NP_054727
UniProt:	O60826

Application Details

Application Notes:	WB: 1:1000. IHC-P: 1:10~50
Restrictions:	For Research Use only

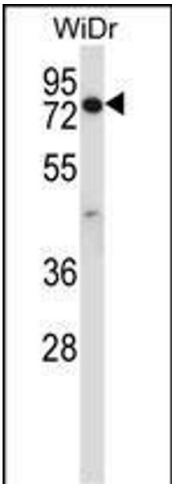
Handling

Format:	Liquid
Buffer:	Purified polyclonal antibody supplied in PBS with 0.09 % (W/V) sodium azide.
Preservative:	Sodium azide
Precaution of Use:	This product contains Sodium azide: a POISONOUS AND HAZARDOUS SUBSTANCE which should be handled by trained staff only.
Storage:	4 °C,-20 °C
Storage Comment:	CCDC22 Antibody (C-term) can be refrigerated at 2-8 °C for up to 6 months. For long term storage, place the at -20 °C.
Expiry Date:	6 months



Immunohistochemistry (Paraffin-embedded Sections)

Image 1. CCDC22 Antibody (C-term) (ABIN657403 and ABIN2846443) immunohistochemistry analysis in formalin fixed and paraffin embedded human stomach tissue followed by peroxidase conjugation of the secondary antibody and DAB staining. This data demonstrates the use of CCDC22 Antibody (C-term) for immunohistochemistry. Clinical relevance has not been evaluated.



Western Blotting

Image 2. CCDC22 Antibody (C-term) (ABIN657403 and ABIN2846443) western blot analysis in WiDr cell line lysates (35 µg/lane). This demonstrates the CCDC22 antibody detected the CCDC22 protein (arrow).