

Datasheet for ABIN657405  
**anti-LIN52 antibody (N-Term)**[Go to Product page](#)

## 2 Images

## Overview

Quantity:	400 µL
Target:	LIN52
Binding Specificity:	AA 44-73, N-Term
Reactivity:	Human
Host:	Rabbit
Clonality:	Polyclonal
Conjugate:	This LIN52 antibody is un-conjugated
Application:	Western Blotting (WB), Immunohistochemistry (Paraffin-embedded Sections) (IHC (p))

## Product Details

Immunogen:	This LIN52 antibody is generated from rabbits immunized with a KLH conjugated synthetic peptide between 44-73 amino acids from the N-terminal region of human LIN52.
Clone:	RB33365
Isotype:	Ig Fraction
Predicted Reactivity:	M
Purification:	This antibody is purified through a protein A column, followed by peptide affinity purification.

## Target Details

Target:	LIN52
Alternative Name:	LIN52 ( <a href="#">LIN52 Products</a> )

## Target Details

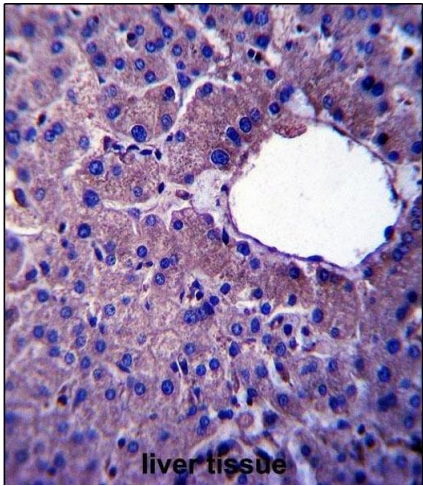
Background:	The specific function of the protein remains unknown.
Molecular Weight:	13001
Gene ID:	91750
NCBI Accession:	<a href="#">NP_001019845</a>
UniProt:	<a href="#">Q52LA3</a>

## Application Details

Application Notes:	WB: 1:1000. IHC-P: 1:10~50
Restrictions:	For Research Use only

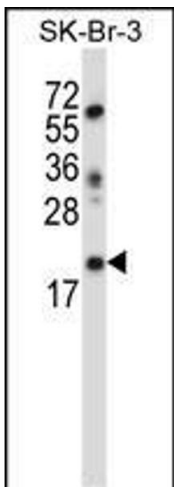
## Handling

Format:	Liquid
Buffer:	Purified polyclonal antibody supplied in PBS with 0.09 % (W/V) sodium azide.
Preservative:	Sodium azide
Precaution of Use:	This product contains Sodium azide: a POISONOUS AND HAZARDOUS SUBSTANCE which should be handled by trained staff only.
Storage:	4 °C,-20 °C
Storage Comment:	LIN52 Antibody (N-term ) can be refrigerated at 2-8 °C for up to 6 months. For long term storage, place the at -20 °C.
Expiry Date:	6 months



Immunohistochemistry (Paraffin-embedded Sections)

**Image 1.** LIN52 Antibody (N-term) (ABIN657405 and ABIN2846445) immunohistochemistry analysis in formalin fixed and paraffin embedded human liver tissue followed by peroxidase conjugation of the secondary antibody and DAB staining. This data demonstrates the use of LIN52 Antibody (N-term) for immunohistochemistry. Clinical relevance has not been evaluated.



Western Blotting

**Image 2.** LIN52 Antibody (N-term ) (ABIN657405 and ABIN2846445) western blot analysis in SK-BR-3 cell line lysates (35 µg/lane). This demonstrates the LIN52 antibody detected the LIN52 protein (arrow).