

Datasheet for ABIN657408
anti-TLE6 antibody (N-Term)

2 Images

[Go to Product page](#)

Overview

| | |
|----------------------|--|
| Quantity: | 400 µL |
| Target: | TLE6 |
| Binding Specificity: | AA 30-58, N-Term |
| Reactivity: | Human |
| Host: | Rabbit |
| Clonality: | Polyclonal |
| Conjugate: | This TLE6 antibody is un-conjugated |
| Application: | Western Blotting (WB), Immunohistochemistry (Paraffin-embedded Sections) (IHC (p)) |

Product Details

| | |
|---------------|--|
| Immunogen: | This TLE6 antibody is generated from rabbits immunized with a KLH conjugated synthetic peptide between 30-58 amino acids from the N-terminal region of human TLE6. |
| Clone: | RB33374 |
| Isotype: | Ig Fraction |
| Purification: | This antibody is purified through a protein A column, followed by peptide affinity purification. |

Target Details

| | |
|-------------------|---|
| Target: | TLE6 |
| Alternative Name: | TLE6 (TLE6 Products) |
| Background: | As a member of the subcortical maternal complex (SCMC), plays an essential role for zygotes |

Target Details

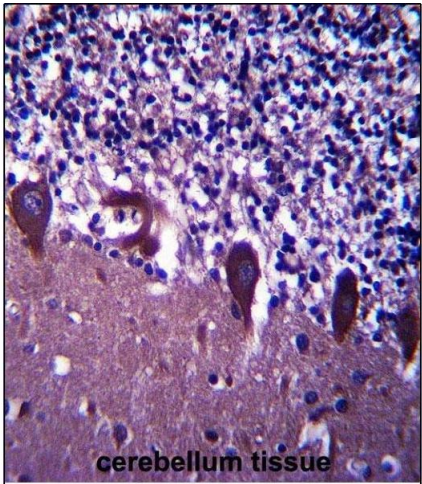
| | |
|-------------------|--|
| | to progress beyond the first embryonic cell divisions (By similarity). |
| Molecular Weight: | 63473 |
| Gene ID: | 79816 |
| NCBI Accession: | NP_001137458 , NP_079036 |
| UniProt: | Q9H808 |
| Pathways: | WNT Signaling |

Application Details

| | |
|--------------------|----------------------------|
| Application Notes: | WB: 1:1000. IHC-P: 1:10~50 |
| Restrictions: | For Research Use only |

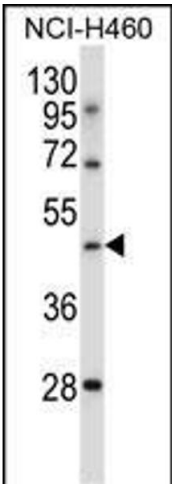
Handling

| | |
|--------------------|--|
| Format: | Liquid |
| Buffer: | Purified polyclonal antibody supplied in PBS with 0.09 % (W/V) sodium azide. |
| Preservative: | Sodium azide |
| Precaution of Use: | This product contains Sodium azide: a POISONOUS AND HAZARDOUS SUBSTANCE which should be handled by trained staff only. |
| Storage: | 4 °C,-20 °C |
| Storage Comment: | TLE6 Antibody (N-term) can be refrigerated at 2-8 °C for up to 6 months. For long term storage, place the at -20 °C. |
| Expiry Date: | 6 months |



Immunohistochemistry (Paraffin-embedded Sections)

Image 1. TLE6 Antibody (N-term) (ABIN657408 and ABIN2846448) immunohistochemistry analysis in formalin fixed and paraffin embedded human cerebellum tissue followed by peroxidase conjugation of the secondary antibody and DAB staining. This data demonstrates the use of TLE6 Antibody (N-term) for immunohistochemistry. Clinical relevance has not been evaluated.



Western Blotting

Image 2. TLE6 Antibody (N-term) (ABIN657408 and ABIN2846448) western blot analysis in NCI- cell line lysates (35 µg/lane). This demonstrates the TLE6 antibody detected the TLE6 protein (arrow).