



[Go to Product page](#)

Datasheet for ABIN657409

## anti-PTPLA antibody (N-Term)

### 2 Images

#### Overview

Quantity:	400 µL
Target:	PTPLA
Binding Specificity:	AA 37-66, N-Term
Reactivity:	Human
Host:	Rabbit
Clonality:	Polyclonal
Conjugate:	This PTPLA antibody is un-conjugated
Application:	Western Blotting (WB), Immunohistochemistry (Paraffin-embedded Sections) (IHC (p))

#### Product Details

Immunogen:	This PTPLA antibody is generated from rabbits immunized with a KLH conjugated synthetic peptide between 37-66 amino acids from the N-terminal region of human PTPLA.
Clone:	RB33378
Isotype:	Ig Fraction
Purification:	This antibody is purified through a protein A column, followed by peptide affinity purification.

#### Target Details

Target:	PTPLA
Alternative Name:	PTPLA ( <a href="#">PTPLA Products</a> )
Background:	The protein encoded by this gene contains a characteristic catalytic motif of the protein

## Target Details

---

tyrosine phosphatases (PTPs) family. The PTP motif of this protein has the highly conserved arginine residue replaced by a proline residue, thus it may represent a distinct class of PTPs. Members of the PTP family are known to be signaling molecules that regulate a variety of cellular processes. This gene was preferentially expressed in both adult and fetal heart. A much lower expression level was detected in skeletal and smooth muscle tissues, and no expression was observed in other tissues. The tissue specific expression in the developing and adult heart suggests a role in regulating cardiac development and differentiation.

---

Molecular Weight: 32388

---

Gene ID: 9200

---

NCBI Accession: [NP\\_055056](#)

---

UniProt: [B0YJ81](#)

---

Pathways: [Regulation of long-term Neuronal Synaptic Plasticity](#)

## Application Details

---

Application Notes: WB: 1:1000. IHC-P: 1:10~50

---

Restrictions: For Research Use only

## Handling

---

Format: Liquid

---

Buffer: Purified polyclonal antibody supplied in PBS with 0.09 % (W/V) sodium azide.

---

Preservative: Sodium azide

---

Precaution of Use: This product contains Sodium azide: a POISONOUS AND HAZARDOUS SUBSTANCE which should be handled by trained staff only.

---

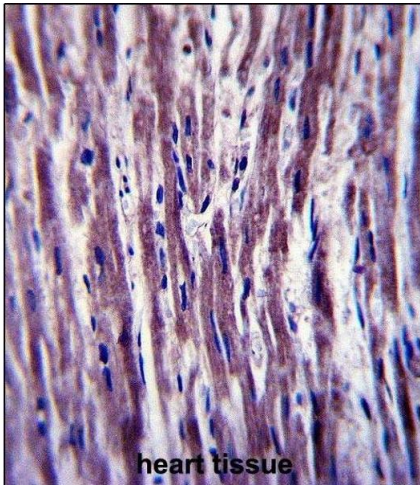
Storage: 4 °C,-20 °C

---

Storage Comment: PTPLA Antibody (N-term) can be refrigerated at 2-8 °C for up to 6 months. For long term storage, place the at -20 °C.

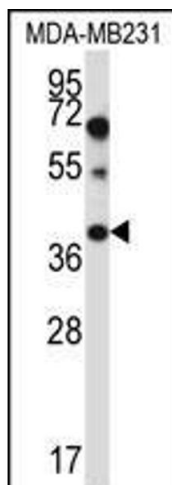
---

Expiry Date: 6 months



### Immunohistochemistry (Paraffin-embedded Sections)

**Image 1.** PTPLA Antibody (N-term) (ABIN657409 and ABIN2846449) immunohistochemistry analysis in formalin fixed and paraffin embedded human heart tissue followed by peroxidase conjugation of the secondary antibody and DAB staining. This data demonstrates the use of PTPLA Antibody (N-term) for immunohistochemistry. Clinical relevance has not been evaluated.



### Western Blotting

**Image 2.** PTPLA Antibody (N-term) (ABIN657409 and ABIN2846449) western blot analysis in MDA-M cell line lysates (35 µg/lane). This demonstrates the PTPLA antibody detected the PTPLA protein (arrow).