

Datasheet for ABIN6574095

SAA ELISA Kit[4 Images](#)[6 Publications](#)[Go to Product page](#)

Overview

Quantity:	96 tests
Target:	SAA
Reactivity:	Human
Method Type:	Competition ELISA
Detection Range:	39.06 ng/mL - 10000 ng/mL
Minimum Detection Limit:	39.06 ng/mL
Application:	ELISA

Product Details

Purpose:	<p>The kit is a competitive inhibition enzyme immunoassay technique for the in vitro quantitative measurement of SAA in human serum, plasma, tissue homogenates, cell lysates, cell culture supernates.</p> <p>We offer validation data (WB) for the kit components. So you can be sure to order a reliable ELISA kit product composed of high quality reagents.</p>
Sample Type:	Cell Culture Supernatant, Cell Lysate, Plasma, Serum, Tissue Homogenate
Analytical Method:	Quantitative
Detection Method:	Colorimetric
Specificity:	This assay has high sensitivity and excellent specificity for detection of Serum Amyloid A (SAA)
Cross-Reactivity (Details):	No significant cross-reactivity or interference between Serum Amyloid A (SAA) and analogues was observed.

Product Details

Sensitivity: 14.73 ng/mL

Components:

- Pre-coated, ready to use 96-well strip plate, flat bottom
- Plate sealer for 96 wells
- Reference Standard
- Standard Diluent
- Detection Reagent A
- Detection Reagent B
- Assay Diluent A
- Assay Diluent B
- Reagent Diluent (if Detection Reagent is lyophilized)
- TMB Substrate
- Stop Solution
- Wash Buffer (30 x concentrate)
- Instruction manual

Target Details

Target: SAA

Abstract: [SAA Products](#)

UniProt: [P0DJ18](#)

Application Details

Comment: Information on standard material:

The standard might be recombinant protein or natural protein, that will depend on the specific kit. Moreover, the expression system is E.coli or yeast or mammal cell. There is 0.05% proclin 300 in the standard as preservative.

Information on reagents:

The stop solution used in the kit is sulfuric acid with concentration of 1 mol/L. And the wash solution is TBS. The standard diluent contains 0.02 % sodium azide, assay diluent A and assay diluent B contain 0.01% sodium azide. Some kits can contain BSA in them.

Information on antibodies:

The provided antibodies and their host vary in different kits.

Sample Volume: 50 μ L

Assay Time: 2 h

Application Details

Plate: Pre-coated

Protocol:

1. Prepare all reagents, samples and standards,
2. Add 50µL standard or sample to each well.
Then add 50µL prepared Detection Reagent A immediately.
Shake and mix. Incubate 1 hour at 37 °C,
3. Aspirate and wash 3 times,
4. Add 100µL prepared Detection Reagent B. Incubate 30 minutes at 37 °C,
5. Aspirate and wash 5 times,
6. Add 90µL Substrate Solution. Incubate 10-20 minutes at 37 °C,
7. Add 50µL Stop Solution. Read at 450 nm immediately.

Reagent Preparation:

1. Bring all kit components and samples to room temperature (18-25 °C) before use. If the kit will not be used up in one time, please only take out strips and reagents for present experiment, and leave the remaining strips and reagents in required condition.
2. Standard - Reconstitute the Standard with 1.0mL of Standard Diluent, keep for 10 minutes at room temperature, shake gently (not to foam). The concentration of the standard in the stock solution is 80,000 ng/mL. First dilute the stock solution to 10,000 ng/mL and the diluted standard serves as the highest standard (10,000ng/mL). Then prepare 5 tubes containing 0.6mL Standard Diluent and produce a quadruple dilution series. Mix each tube thoroughly before the next transfer. Set up 5 points of diluted standard such as 10,000ng/mL, 2,500ng/mL, 625ng/mL, 156.25ng/mL, 39.06ng/mL, and the last tube with Standard Diluent is the blank as 0ng/mL.
3. Detection Reagent A and Detection Reagent B - If lyophilized reconstitute the Detection Reagent A with 150µL of Reagent Diluent, kept for 10 minutes at room temperature, shake gently (not to foam). Briefly spin or centrifuge the stock Detection A and Detection B before use. Dilute them to the working concentration 100-fold with Assay Diluent A and B, respectively.
4. Wash Solution - Dilute 20 mL of Wash Solution concentrate (30x) with 580 mL of deionized or distilled water to prepare 600 mL of Wash Solution (1x).
5. TMB substrate - Aspirate the needed dosage of the solution with sterilized tips and do not dump the residual solution into the vial again.

Note:

1. Making serial dilution in the wells directly is not permitted.
 2. Prepare standard within 15 minutes before assay. Please do not dissolve the reagents at 37 °C directly.
 3. Detection Reagent A and B are sticky solutions, therefore, slowly pipette them to reduce the volume errors.
 4. Please carefully reconstitute Standards or working Detection Reagent A and B according to the instruction, and avoid foaming and mix gently until the crystals are completely dissolved. To minimize imprecision caused by pipetting, use small volumes and ensure that pipettors are calibrated. It is recommended to suck more than 10µL for one pipetting.
 5. The reconstituted Standards, Detection Reagent A and Detection Reagent B can be used only
-

Application Details

once.

6. If crystals have formed in the Wash Solution concentrate (30x), warm to room temperature and mix gently until the crystals are completely dissolved.
7. Contaminated water or container for reagent preparation will influence the detection result.

Sample Preparation:

- It is recommended to use fresh samples without long storage, otherwise protein degradation and denaturation may occur in these samples, leading to false results. Samples should therefore be stored for a short period at 2 - 8 °C or aliquoted at -20 °C (≤1 month) or -80 °C (≤3 months). Repeated freeze-thaw cycles should be avoided. Prior to assay, the frozen samples should be slowly thawed and centrifuged to remove precipitates.
- If the sample type is not specified in the instructions, a preliminary test is necessary to determine compatibility with the kit.
- If a lysis buffer is used to prepare tissue homogenates or cell culture supernatant, there is a possibility of causing a deviation due to the introduced chemical substance. The recommended dilution factor is for reference only.
- Please estimate the concentration of the samples before performing the test. If the values are not in the range of the standard curve, the optimal sample dilution for the particular experiment has to be determined. Samples should then be diluted with PBS (pH = 7.0-7.2).

Assay Precision:

Intra-assay Precision (Precision within an assay): 3 samples with low, middle and high level of target were tested 20 times on one plate, respectively.

Inter-assay Precision (Precision between assays): 3 samples with low, middle and high level of target were tested on 3 different plates, 8 replicates in each plate.

$$CV(\%) = SD/\text{mean} \times 100$$

Intra-Assay: CV < 10%

Inter-Assay: CV < 12%

Restrictions:

For Research Use only

Handling

Precaution of Use:

The Stop Solution suggested for use with this kit is an acid solution. Wear eye, hand, face, and clothing protection when using this material.

Storage:

4 °C/-20 °C

Storage Comment:

1. For unopened kit: All reagents should be stored according to the labels on the vials. The Standard, Detection Reagent A, Detection Reagent B, and 96-well Strip Plate should be stored at -20 °C upon receipt, while the other reagents should be stored at 4 °C.
2. For opened kits: the remaining reagents must be stored according to the above storage conditions. In addition, please return the unused wells to the foil pouch containing the desiccant and seal the foil pouch with the zipper.

Expiry Date: 6 months

Publications

Product cited in: Timur, Yimaz, Kahyaoglu, Inal, Erkaya: "The effect of serum and follicular fluid amyloid-associated protein levels on in vitro fertilization outcome in patients with polycystic ovary syndrome." in: **Journal of assisted reproduction and genetics**, Vol. 32, Issue 11, pp. 1637-42, (2016) ([PubMed](#)).

Upur, Chen, Kamilijiang, Deng, Sulaiman, Aizezi, Wu, Tulake, Abudula: "Identification of plasma protein markers common to patients with malignant tumour and Abnormal Savda in Uighur medicine: a prospective clinical study." in: **BMC complementary and alternative medicine**, Vol. 15, pp. 9, (2015) ([PubMed](#)).

Eren, Ellidag, Y?lmaz, Ayd?n, Y?lmaz: "No association between vitamin D levels and inflammation markers in patients with acute coronary syndrome." in: **Advances in medical sciences**, Vol. 60, Issue 1, pp. 89-93, (2015) ([PubMed](#)).

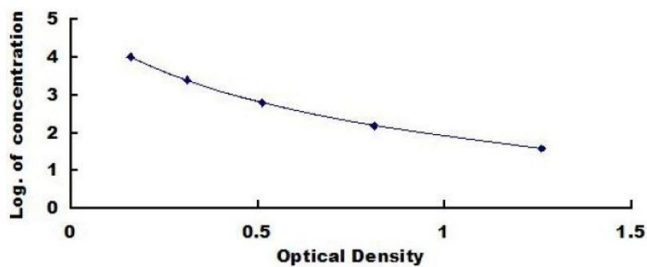
Moura Neto, Parisi, Alegre, Pavin, Tambascia, Zantut-Wittmann: "Relation of thyroid hormone abnormalities with subclinical inflammatory activity in patients with type 1 and type 2 diabetes mellitus." in: **Endocrine**, (2015) ([PubMed](#)).

Nasiripour, Gholami, Mousavi, Mohagheghi, Radfar, Abdollahi, Khazaeipour, Mojtahedzadeh: "Comparison of the Effects of Enoxaparin and Heparin on Inflammatory Biomarkers in Patients with ST-segment Elevated Myocardial Infarction: A prospective Open Label Pilot Clinical Trial." in: **Iranian journal of pharmaceutical research : IJPR**, Vol. 13, Issue 2, pp. 583-90, (2014) ([PubMed](#)).

There are more publications referencing this product on: [Product page](#)

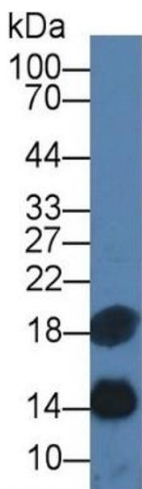
ELISA

Image 1. Typical standard curve



Western Blotting

Image 2. Mouse Capture antibody from the kit in WB with Positive Control: Sample Human Serum.



Western Blotting

Image 3. WB of Protein Standard: different control antibodies against Highly purified E. coli-expressed recombinant human SAA.



Please check the [product details page](#) for more images. Overall 4 images are available for ABIN6574095.