



[Go to Product page](#)

Datasheet for ABIN657432
anti-EMID1 antibody (N-Term)

1 Image

Overview

Quantity:	400 µL
Target:	EMID1
Binding Specificity:	AA 54-82, N-Term
Reactivity:	Human
Host:	Rabbit
Clonality:	Polyclonal
Conjugate:	This EMID1 antibody is un-conjugated
Application:	Western Blotting (WB)

Product Details

Immunogen:	This EMID1 antibody is generated from rabbits immunized with a KLH conjugated synthetic peptide between 54-82 amino acids from the N-terminal region of human EMID1.
Clone:	RB33492
Isotype:	Ig Fraction
Purification:	This antibody is purified through a protein A column, followed by peptide affinity purification.

Target Details

Target:	EMID1
Alternative Name:	EMID1 (EMID1 Products)
Background:	EMID1 contains 1 collagen-like domain and 1 EMI domain. The exact function of EMID1

Target Details

remains unknown.

Molecular Weight: 45292

Gene ID: 129080

NCBI Accession: [NP_001254824](#), [NP_597712](#)

UniProt: [Q96A84](#)

Application Details

Application Notes: WB: 1:1000

Restrictions: For Research Use only

Handling

Format: Liquid

Buffer: Purified polyclonal antibody supplied in PBS with 0.09 % (W/V) sodium azide.

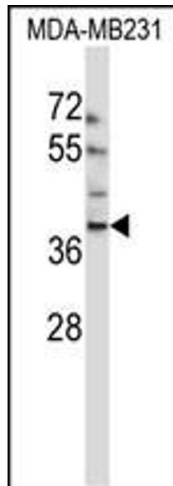
Preservative: Sodium azide

Precaution of Use: This product contains Sodium azide: a POISONOUS AND HAZARDOUS SUBSTANCE which should be handled by trained staff only.

Storage: 4 °C, -20 °C

Storage Comment: EMID1 Antibody (N-term) can be refrigerated at 2-8 °C for up to 6 months. For long term storage, place the at -20 °C.

Expiry Date: 6 months



Western Blotting

Image 1. EMID1 Antibody (N-term) (ABIN657432 and ABIN2846465) western blot analysis in MDA-M cell line lysates (35 µg/lane). This demonstrates the EMID1 antibody detected the EMID1 protein (arrow).