



Datasheet for ABIN657433  
**anti-SIDT1 antibody (AA 412-441)**



[Go to Product page](#)

1 Image

### Overview

Quantity:	400 µL
Target:	SIDT1
Binding Specificity:	AA 412-441
Reactivity:	Human
Host:	Rabbit
Clonality:	Polyclonal
Application:	Western Blotting (WB)

### Product Details

Immunogen:	This SIDT1 antibody is generated from rabbits immunized with a KLH conjugated synthetic peptide between 412-441 amino acids from the Central region of human SIDT1.
Clone:	RB33493
Isotype:	Ig Fraction
Predicted Reactivity:	M, Rat
Purification:	This antibody is purified through a protein A column, followed by peptide affinity purification.

### Target Details

Target:	SIDT1
Alternative Name:	SIDT1 ( <a href="#">SIDT1 Products</a> )
Background:	SIDT1 belongs to the SID1 family.

## Target Details

Molecular Weight:	93839
Gene ID:	54847
NCBI Accession:	<a href="#">NP_060169</a>
UniProt:	<a href="#">Q9NXL6</a>

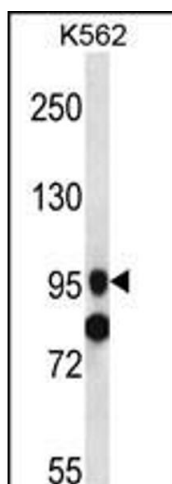
## Application Details

Application Notes:	WB: 1:1000
Restrictions:	For Research Use only

## Handling

Format:	Liquid
Buffer:	Purified polyclonal antibody supplied in PBS with 0.09 % (W/V) sodium azide.
Preservative:	Sodium azide
Precaution of Use:	This product contains Sodium azide: a POISONOUS AND HAZARDOUS SUBSTANCE which should be handled by trained staff only.
Storage:	4 °C,-20 °C
Storage Comment:	SIDT1 Antibody (Center) can be refrigerated at 2-8 °C for up to 6 months. For long term storage, place the at -20 °C.
Expiry Date:	6 months

## Images



### Western Blotting

**Image 1.** SIDT1 Antibody (Center) (ABIN657433 and ABIN2846466) western blot analysis in K562 cell line lysates (35 µg/lane). This demonstrates the SIDT1 antibody detected the SIDT1 protein (arrow).