



[Go to Product page](#)

Datasheet for ABIN657452

## anti-NLRP6 antibody (N-Term)

### 2 Images

#### Overview

Quantity:	400 µL
Target:	NLRP6
Binding Specificity:	AA 168-197, N-Term
Reactivity:	Human
Host:	Rabbit
Clonality:	Polyclonal
Conjugate:	This NLRP6 antibody is un-conjugated
Application:	Western Blotting (WB)

#### Product Details

Immunogen:	This NLRP6 antibody is generated from rabbits immunized with a KLH conjugated synthetic peptide between 168-197 amino acids from the N-terminal region of human NLRP6.
Clone:	RB33587
Isotype:	Ig Fraction
Purification:	This antibody is purified through a protein A column, followed by peptide affinity purification.

#### Target Details

Target:	NLRP6
Alternative Name:	NLRP6 ( <a href="#">NLRP6 Products</a> )
Background:	NALPs are cytoplasmic proteins that form a subfamily within the larger CATERPILLER protein

## Target Details

---

family. Most short NALPs, such as NALP6, have an N-terminal pyrin (MEFV, MIM 608107) domain (PYD), followed by a NACHT domain, a NACHT-associated domain (NAD), and a C-terminal leucine-rich repeat (LRR) region. The long NALP, NALP1 (MIM 606636), also has a C-terminal extension containing a function to find domain (FIIND) and a caspase recruitment domain (CARD). NALPs are implicated in the activation of proinflammatory caspases (e.g., CASP1, MIM 147678) via their involvement in multiprotein complexes called inflammasomes (Tschopp et al., 2003 [PubMed 12563287]).

Molecular Weight:	98768
Gene ID:	171389
NCBI Accession:	<a href="#">NP_001263629</a> , <a href="#">NP_612202</a>
UniProt:	<a href="#">P59044</a>
Pathways:	<a href="#">Inflammasome</a>

## Application Details

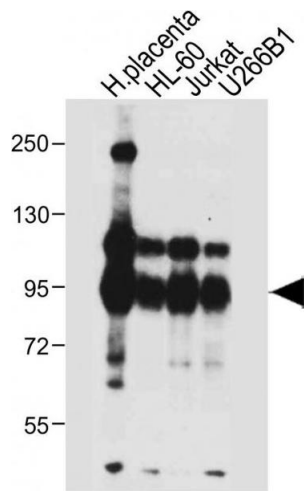
---

Application Notes:	WB: 1:2000. WB: 1:4000
Restrictions:	For Research Use only

## Handling

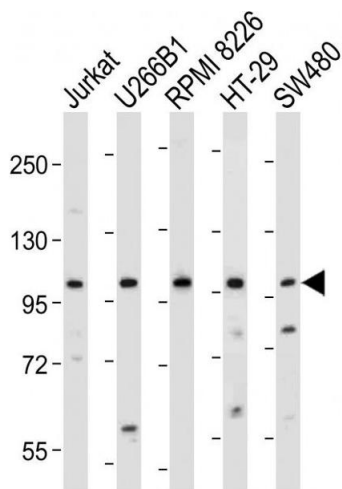
---

Format:	Liquid
Buffer:	Purified polyclonal antibody supplied in PBS with 0.09 % (W/V) sodium azide.
Preservative:	Sodium azide
Precaution of Use:	This product contains Sodium azide: a POISONOUS AND HAZARDOUS SUBSTANCE which should be handled by trained staff only.
Storage:	4 °C,-20 °C
Storage Comment:	NLRP6 Antibody (N-term) can be refrigerated at 2-8 °C for up to 6 months. For long term storage, place the at -20 °C.
Expiry Date:	6 months



### Western Blotting

**Image 1.** All lanes : Anti-NLRP6 Antibody (N-term) at 1:4000 dilution Lane 1: Human placenta tissue lysate Lane 2: HL-60 whole cell lysate Lane 3: Jurkat whole cell lysate Lane 4: U266B1 whole cell lysate Lysates/proteins at 20 µg per lane. Secondary Goat Anti-Rabbit IgG, (H+L), Peroxidase conjugated at 1/10000 dilution. Predicted band size : 99 kDa Blocking/Dilution buffer: 5 % NFDN/TBST.



### Western Blotting

**Image 2.** All lanes : Anti-NLRP6 Antibody (N-term) at 1:2000 dilution Lane 1: Jurkat whole cell lysate Lane 2: U266B1 whole cell lysate Lane 3: RI 8226 whole cell lysate Lane 4: HT-29 whole cell lysate Lane 5: S whole cell lysate Lysates/proteins at 20 µg per lane. Secondary Goat Anti-Rabbit IgG, (H+L), Peroxidase conjugated at 1/10000 dilution. Predicted band size : 99 kDa Blocking/Dilution buffer: 5 % NFDN/TBST.