

Datasheet for ABIN657458

**anti-TUBA4A antibody (C-Term)****2** Images[Go to Product page](#)

## Overview

|                      |  |
|----------------------|--|
| Quantity:            | 400 µL   |
| Target:              | TUBA4A   |
| Binding Specificity: | AA 417-446, C-Term   |
| Reactivity:          | Human, Mouse, Rat  |
| Host:                | Rabbit   |
| Clonality:           | Polyclonal   |
| Conjugate:           | This TUBA4A antibody is un-conjugated  |
| Application:         | Western Blotting (WB), Immunohistochemistry (Paraffin-embedded Sections) (IHC (p)) |

## Product Details

|                       |  |
|-----------------------|--|
| Immunogen:            | This TUBA4A antibody is generated from rabbits immunized with a KLH conjugated synthetic peptide between 417-446 amino acids from the C-terminal region of human TUBA4A. |
| Clone:                | RB33611  |
| Isotype:              | Ig Fraction  |
| Predicted Reactivity: | B, Pr  |
| Purification:         | This antibody is purified through a protein A column, followed by peptide affinity purification.   |

## Target Details

|                   |  |
|-------------------|--|
| Target:           | TUBA4A                                     |
| Alternative Name: | TUBA4A ( <a href="#">TUBA4A Products</a> ) |

## Target Details

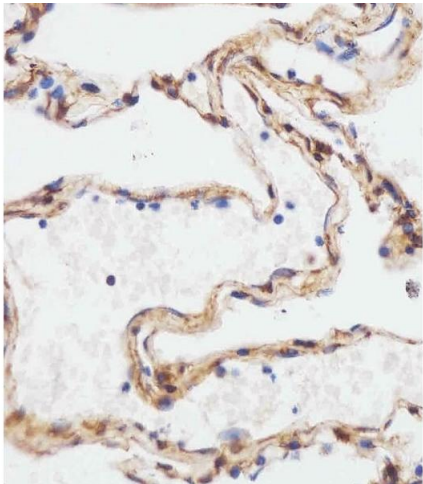
|                   |  |
|-------------------|--|
| Background:       | Microtubules of the eukaryotic cytoskeleton perform essential and diverse functions and are composed of a heterodimer of alpha and beta tubulin. The genes encoding these microtubule constituents are part of the tubulin superfamily, which is composed of six distinct families. Genes from the alpha, beta and gamma tubulin families are found in all eukaryotes. The alpha and beta tubulins represent the major components of microtubules, while gamma tubulin plays a critical role in the nucleation of microtubule assembly. There are multiple alpha and beta tubulin genes and they are highly conserved among and between species. This gene encodes an alpha tubulin that is a highly conserved homolog of a rat testis-specific alpha tubulin. |
| Molecular Weight: | 49924  |
| Gene ID:          | 7277   |
| NCBI Accession:   | <a href="#">NP_001265481</a> , <a href="#">NP_005991</a>   |
| UniProt:          | <a href="#">P68366</a>   |
| Pathways:         | <a href="#">Microtubule Dynamics</a> , <a href="#">M Phase</a>   |

## Application Details

|                    |                         |
|--------------------|-------------------------|
| Application Notes: | WB: 1:8000. IHC-P: 1:25 |
| Restrictions:      | For Research Use only   |

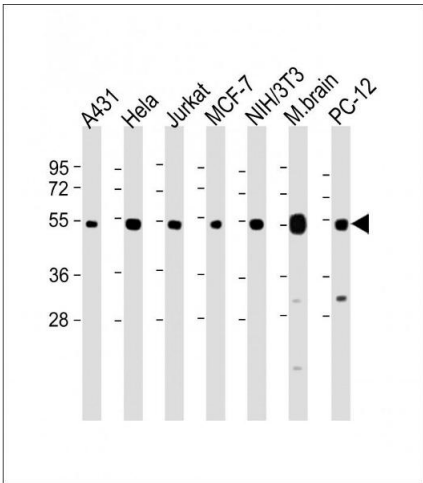
## Handling

|                    |  |
|--------------------|--|
| Format:            | Liquid   |
| Buffer:            | Purified polyclonal antibody supplied in PBS with 0.09 % (W/V) sodium azide.   |
| Preservative:      | Sodium azide   |
| Precaution of Use: | This product contains Sodium azide: a POISONOUS AND HAZARDOUS SUBSTANCE which should be handled by trained staff only. |
| Storage:           | 4 °C, -20 °C   |
| Storage Comment:   | TUBA4A Antibody (C-term) can be refrigerated at 2-8 °C for up to 6 months. For long term storage, place the at -20 °C. |
| Expiry Date:       | 6 months   |



Immunohistochemistry (Paraffin-embedded Sections)

**Image 1.** B staining TUBA4A in human lung tissue sections by Immunohistochemistry (IHC-P - paraformaldehyde-fixed, paraffin-embedded sections). Tissue was fixed with formaldehyde and blocked with 3 % BSA for 0.5 hour at room temperature, antigen retrieval was by heat mediation with a citrate buffer (pH 6). Samples were incubated with primary antibody (1/25) for 1 hours at 37 °C. A undiluted biotinylated goat polyvalent antibody was used as the secondary antibody.



Western Blotting

**Image 2.** All lanes : Anti-TUBA4A Antibody (C-term) at 1:8000 dilution Lane 1: A431 whole cell lysate Lane 2: HeLa whole cell lysate Lane 3: Jurkat whole cell lysate Lane 4: MCF-7 whole cell lysate Lane 5: NIH/3T3 whole cell lysate Lane 6: Mouse brain lysate Lane 7: PC-12 whole cell lysate Lysates/proteins at 20 µg per lane. Secondary Goat Anti-Rabbit IgG, (H+L), Peroxidase conjugated at 1/10000 dilution. Predicted band size : 50 kDa Blocking/Dilution buffer: 5 % NFDM/TBST.