



[Go to Product page](#)

Datasheet for ABIN657461  
**anti-CD1a antibody (AA 75-104)**

2 Images

Overview

Quantity:	400 µL
Target:	CD1a
Binding Specificity:	AA 75-104
Reactivity:	Human
Host:	Rabbit
Clonality:	Polyclonal
Conjugate:	This CD1a antibody is un-conjugated
Application:	Western Blotting (WB), Immunohistochemistry (Paraffin-embedded Sections) (IHC (p))

Product Details

Immunogen:	This CD1A antibody is generated from rabbits immunized with a KLH conjugated synthetic peptide between 75-104 amino acids from the Central region of human CD1A.
Clone:	RB33621
Isotype:	Ig Fraction
Purification:	This antibody is purified through a protein A column, followed by peptide affinity purification.

Target Details

Target:	CD1a
Alternative Name:	CD1A ( <a href="#">CD1a Products</a> )
Background:	This gene encodes a member of the CD1 family of transmembrane glycoproteins, which are

## Target Details

---

structurally related to the major histocompatibility complex (MHC) proteins and form heterodimers with beta-2-microglobulin. The CD1 proteins mediate the presentation of primarily lipid and glycolipid antigens of self or microbial origin to T cells. The human genome contains five CD1 family genes organized in a cluster on chromosome 1. The CD1 family members are thought to differ in their cellular localization and specificity for particular lipid ligands. The protein encoded by this gene localizes to the plasma membrane and to recycling vesicles of the early endocytic system. Alternatively spliced transcript variants have been observed, but their biological validity has not been determined.

Molecular Weight:	37077
Gene ID:	909
NCBI Accession:	<a href="#">NP_001754</a>
UniProt:	<a href="#">P06126</a>
Pathways:	<a href="#">Regulation of Leukocyte Mediated Immunity</a> , <a href="#">Positive Regulation of Immune Effector Process</a>

## Application Details

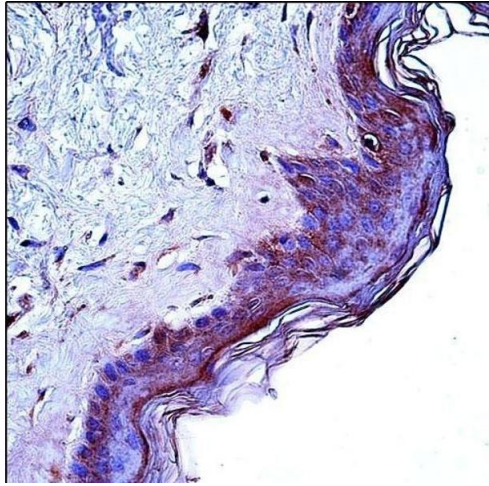
---

Application Notes:	WB: 1:1000. IHC-P: 1:10~50
Restrictions:	For Research Use only

## Handling

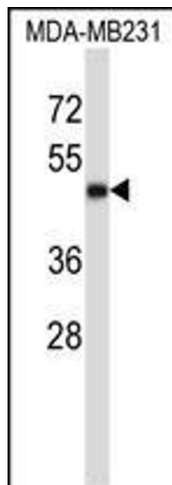
---

Format:	Liquid
Buffer:	Purified polyclonal antibody supplied in PBS with 0.09 % (W/V) sodium azide.
Preservative:	Sodium azide
Precaution of Use:	This product contains Sodium azide: a POISONOUS AND HAZARDOUS SUBSTANCE which should be handled by trained staff only.
Storage:	4 °C, -20 °C
Storage Comment:	CD1A Antibody (Center) can be refrigerated at 2-8 °C for up to 6 months. For long term storage, place the at -20 °C.
Expiry Date:	6 months



### Immunohistochemistry (Paraffin-embedded Sections)

**Image 1.** CD1A Antibody (Center) (ABIN657461 and ABIN2846488) immunohistochemistry analysis in formalin fixed and paraffin embedded human skin tissue followed by peroxidase conjugation of the secondary antibody and DAB staining. This data demonstrates the use of CD1A Antibody (Center) for immunohistochemistry. Clinical relevance has not been evaluated.



### Western Blotting

**Image 2.** CD1A Antibody (Center) (ABIN657461 and ABIN2846488) western blot analysis in MDA-M cell line lysates (35 µg/lane). This demonstrates the CD1A antibody detected the CD1A protein (arrow).