

Datasheet for ABIN657464

anti-CD33 antibody (AA 88-117)[Go to Product page](#)**2** Images

Overview

Quantity:	400 µL
Target:	CD33
Binding Specificity:	AA 88-117
Reactivity:	Human
Host:	Rabbit
Clonality:	Polyclonal
Conjugate:	This CD33 antibody is un-conjugated
Application:	Western Blotting (WB)

Product Details

Immunogen:	This CD33 antibody is generated from rabbits immunized with a KLH conjugated synthetic peptide between 88-117 amino acids from the Central region of human CD33.
Clone:	RB33637
Isotype:	Ig Fraction
Purification:	This antibody is purified through a protein A column, followed by peptide affinity purification.

Target Details

Target:	CD33
Alternative Name:	CD33 (CD33 Products)
Background:	Putative adhesion molecule of myelomonocytic-derived cells that mediates sialic-acid

Target Details

dependent binding to cells. Preferentially binds to alpha-2,6-linked sialic acid. The sialic acid recognition site may be masked by cis interactions with sialic acids on the same cell surface. In the immune response, may act as an inhibitory receptor upon ligand induced tyrosine phosphorylation by recruiting cytoplasmic phosphatase(s) via their SH2 domain(s) that block signal transduction through dephosphorylation of signaling molecules. Induces apoptosis in acute myeloid leukemia (in vitro).

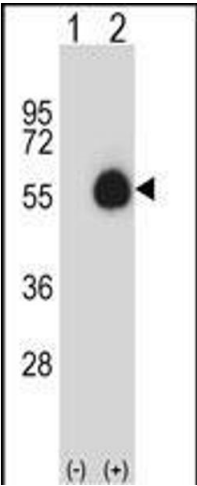
Molecular Weight:	39825
Gene ID:	945
NCBI Accession:	NP_001076087 , NP_001171079 , NP_001763
UniProt:	P20138

Application Details

Application Notes:	WB: 1:1000. WB: 1:1000
Restrictions:	For Research Use only

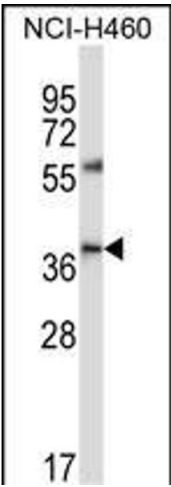
Handling

Format:	Liquid
Buffer:	Purified polyclonal antibody supplied in PBS with 0.09 % (W/V) sodium azide.
Preservative:	Sodium azide
Precaution of Use:	This product contains Sodium azide: a POISONOUS AND HAZARDOUS SUBSTANCE which should be handled by trained staff only.
Storage:	4 °C, -20 °C
Storage Comment:	CD33 Antibody (Center) can be refrigerated at 2-8 °C for up to 6 months. For long term storage, place the at -20 °C.
Expiry Date:	6 months



Western Blotting

Image 1. Western blot analysis of CD33 (arrow) using rabbit polyclonal CD33 Antibody (Center) (ABIN657464 and ABIN2846492). 293 cell lysates (2 µg/lane) either nontransfected (Lane 1) or transiently transfected (Lane 2) with the CD33 gene.



Western Blotting

Image 2. CD33 Antibody (Center) (ABIN657464 and ABIN2846492) western blot analysis in NCI- cell line lysates (35 µg/lane). This demonstrates the CD33 antibody detected the CD33 protein (arrow).