



[Go to Product page](#)

Datasheet for ABIN657465

## anti-Lactate Dehydrogenase A antibody (C-Term)

### 3 Images

#### Overview

Quantity:	400 µL
Target:	Lactate Dehydrogenase A (LDHA)
Binding Specificity:	AA 204-232, C-Term
Reactivity:	Human, Mouse, Rat
Host:	Rabbit
Clonality:	Polyclonal
Application:	Western Blotting (WB), Immunofluorescence (IF), Immunohistochemistry (Paraffin-embedded Sections) (IHC (p))

#### Product Details

Immunogen:	This LDHA antibody is generated from rabbits immunized with a KLH conjugated synthetic peptide between 204-232 amino acids from the C-terminal region of human LDHA.
Clone:	RB33661
Isotype:	Ig Fraction
Predicted Reactivity:	Pr
Purification:	This antibody is purified through a protein A column, followed by peptide affinity purification.

#### Target Details

Target:	Lactate Dehydrogenase A (LDHA)
Alternative Name:	LDHA ( <a href="#">LDHA Products</a> )

## Target Details

---

Background:	The protein encoded by this gene catalyzes the conversion of L-lactate and NAD to pyruvate and NADH in the final step of anaerobic glycolysis. The protein is found predominantly in muscle tissue and belongs to the lactate dehydrogenase family. Mutations in this gene have been linked to exertional myoglobinuria. Multiple transcript variants encoding different isoforms have been found for this gene. The human genome contains several non-transcribed pseudogenes of this gene.
Molecular Weight:	36689
Gene ID:	3939
NCBI Accession:	<a href="#">NP_001128711</a> , <a href="#">NP_001158886</a> , <a href="#">NP_001158887</a> , <a href="#">NP_001158888</a> , <a href="#">NP_005557</a>
UniProt:	<a href="#">P00338</a>
Pathways:	<a href="#">Warburg Effect</a>

## Application Details

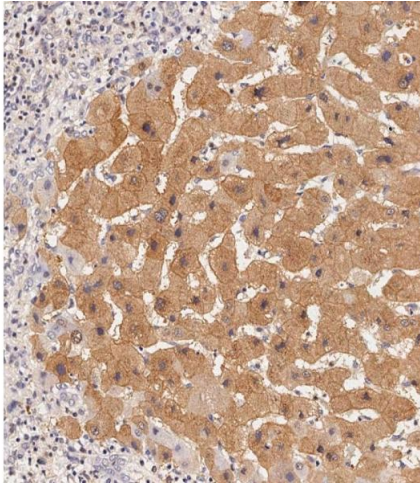
---

Application Notes:	IF: 1:10~50. WB: 1:2000. IHC-P-Leica: 1:500
Restrictions:	For Research Use only

## Handling

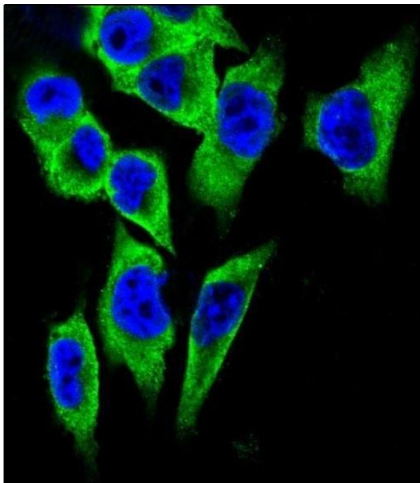
---

Format:	Liquid
Buffer:	Purified polyclonal antibody supplied in PBS with 0.09 % (W/V) sodium azide.
Preservative:	Sodium azide
Precaution of Use:	This product contains Sodium azide: a POISONOUS AND HAZARDOUS SUBSTANCE which should be handled by trained staff only.
Storage:	4 °C,-20 °C
Storage Comment:	LDHA Antibody (C-term) can be refrigerated at 2-8 °C for up to 6 months. For long term storage, place the at -20 °C.
Expiry Date:	6 months



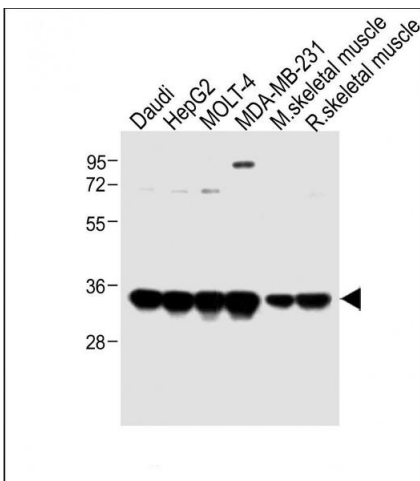
### Immunohistochemistry (Paraffin-embedded Sections)

**Image 1.** Immunohistochemical analysis of paraffin-embedded Human hepatocarcinoma tissue using (ABIN657465 and ABIN2846493) performed on the Leica® BOND RXm. Tissue was fixed with formaldehyde at room temperature, antigen retrieval was by heat mediation with a EDTA buffer (pH 9.0). Samples were incubated with primary Antibody (1:500) for 1 hours at room temperature. A undiluted biotinylated CRF Anti-Polyvalent HRP Polymer antibody was used as the secondary antibody.



### Immunofluorescence

**Image 2.** Confocal immunofluorescent analysis of LDHA Antibody (C-term) (ABIN657465 and ABIN2846493) with cell followed by Alexa Fluor 488-conjugated goat anti-rabbit IgG (green). DI was used to stain the cell nuclear (blue).



### Western Blotting

**Image 3.** All lanes : Anti-LDHA Antibody (C-term) at 1:2000 dilution Lane 1: Daudi whole cell lysate Lane 2: HepG2 whole cell lysate Lane 3: MOLT-4 whole cell lysate Lane 4: MDA-MB-231 whole cell lysate Lane 5: Mouse skeletal muscle lysate Lane 6: Rat skeletal muscle lysate Lysates/proteins at 20 µg per lane. Secondary Goat Anti-Rabbit IgG, (H+L), Peroxidase conjugated at 1/10000 dilution. Predicted band size : 37 kDa Blocking/Dilution buffer: 5 % NFDm/TBST.