

Datasheet for ABIN657466  
**anti-PROC antibody (AA 177-206)**[Go to Product page](#)

## 3 Images

## Overview

Quantity:	400 µL
Target:	PROC
Binding Specificity:	AA 177-206
Reactivity:	Human
Host:	Rabbit
Clonality:	Polyclonal
Conjugate:	This PROC antibody is un-conjugated
Application:	Western Blotting (WB), Immunofluorescence (IF), Immunohistochemistry (Paraffin-embedded Sections) (IHC (p))

## Product Details

Immunogen:	This PROC antibody is generated from rabbits immunized with a KLH conjugated synthetic peptide between 177-206 amino acids from the Central region of human PROC.
Clone:	RB33669
Isotype:	Ig Fraction
Purification:	This antibody is purified through a protein A column, followed by peptide affinity purification.

## Target Details

Target:	PROC
Alternative Name:	PROC ( <a href="#">PROC Products</a> )

## Target Details

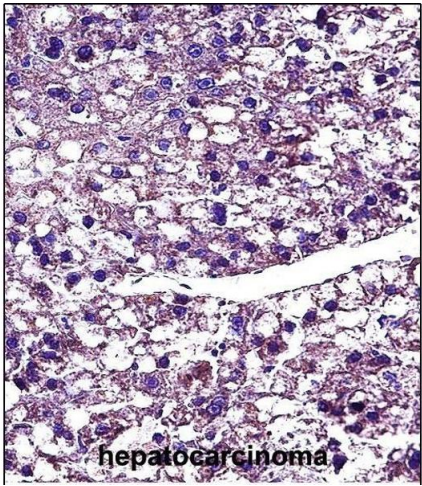
Target Type:	Viral Protein
Background:	This gene encodes a vitamin K-dependent plasma glycoprotein. The encoded protein is cleaved to its activated form by the thrombin-thrombomodulin complex. This activated form contains a serine protease domain and functions in degradation of the activated forms of coagulation factors V and VIII. Mutations in this gene have been associated with thrombophilia due to protein C deficiency, neonatal purpura fulminans, and recurrent venous thrombosis.
Molecular Weight:	52071
Gene ID:	5624
NCBI Accession:	<a href="#">NP_000303</a>
UniProt:	<a href="#">P04070</a>

## Application Details

Application Notes:	IF: 1:10~50. WB: 1:500-1:1000. IHC-P: 1:10~50
Restrictions:	For Research Use only

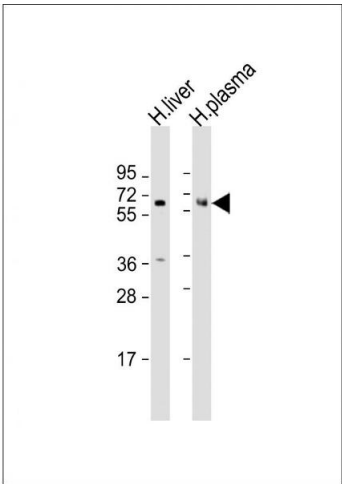
## Handling

Format:	Liquid
Buffer:	Purified polyclonal antibody supplied in PBS with 0.09 % (W/V) sodium azide.
Preservative:	Sodium azide
Precaution of Use:	This product contains Sodium azide: a POISONOUS AND HAZARDOUS SUBSTANCE which should be handled by trained staff only.
Storage:	4 °C,-20 °C
Storage Comment:	PROC Antibody (Center) can be refrigerated at 2-8 °C for up to 6 months. For long term storage, place the at -20 °C.
Expiry Date:	6 months



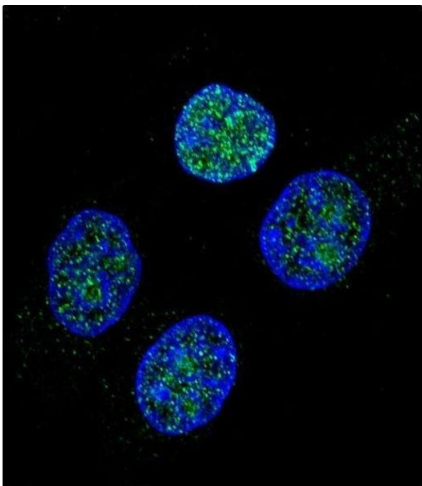
### Immunohistochemistry (Paraffin-embedded Sections)

**Image 1.** PROC Antibody (Center) (ABIN657466 and ABIN2846494) immunohistochemistry analysis in formalin fixed and paraffin embedded human hepatocarcinoma followed by peroxidase conjugation of the secondary antibody and DAB staining. This data demonstrates the use of PROC Antibody (Center) for immunohistochemistry. Clinical relevance has not been evaluated.



### Western Blotting

**Image 2.** All lanes : Anti-PROC Antibody (Center) at 1:500-1:1000 dilution Lane 1: human liver lysate Lane 2: human plasma lysate Lysates/proteins at 20 µg per lane. Secondary Goat Anti-Rabbit IgG, (H+L), Peroxidase conjugated at 1/10000 dilution. Predicted band size : 52 kDa Blocking/Dilution buffer: 5 % NFDm/TBST.



### Immunofluorescence

**Image 3.** Confocal immunofluorescent analysis of PROC Antibody (Center) (ABIN657466 and ABIN2846494) with HeLa cell followed by Alexa Fluor 488-conjugated goat anti-rabbit IgG (green). DAPI was used to stain the cell nuclear (blue).