



Datasheet for ABIN657470

anti-Estrogen Receptor alpha antibody (AA 246-273)



[Go to Product page](#)

5 Images

4 Publications

Overview

Quantity:	400 µL
Target:	Estrogen Receptor alpha (ESR1)
Binding Specificity:	AA 246-273
Reactivity:	Human, Mouse
Host:	Rabbit
Clonality:	Polyclonal
Conjugate:	This Estrogen Receptor alpha antibody is un-conjugated
Application:	Western Blotting (WB), Immunofluorescence (IF), Immunohistochemistry (Paraffin-embedded Sections) (IHC (p))

Product Details

Immunogen:	This ESR1/ER antibody is generated from rabbits immunized with a KLH conjugated synthetic peptide between 246-273 amino acids from the Central region of human ESR1/ER.
Clone:	RB33807
Isotype:	Ig Fraction
Predicted Reactivity:	B, Hs, Pig, Rat
Purification:	This antibody is purified through a protein A column, followed by peptide affinity purification.

Target Details

Target:	Estrogen Receptor alpha (ESR1)
---------	--------------------------------

Target Details

Alternative Name: [ESR1/ER \(ESR1 Products\)](#)

Background: This gene encodes an estrogen receptor, a ligand-activated transcription factor composed of several domains important for hormone binding, DNA binding, and activation of transcription. The protein localizes to the nucleus where it may form a homodimer or a heterodimer with estrogen receptor 2. Estrogen and its receptors are essential for sexual development and reproductive function, but also play a role in other tissues such as bone. Estrogen receptors are also involved in pathological processes including breast cancer, endometrial cancer, and osteoporosis. Alternative splicing results in several transcript variants, which differ in their 5' UTRs and use different promoters.

Molecular Weight: 66216

Gene ID: 2099

NCBI Accession: [NP_000116](#), [NP_001116212](#), [NP_001116213](#), [NP_001116214](#)

UniProt: [P03372](#)

Pathways: [Nuclear Receptor Transcription Pathway](#), [EGFR Signaling Pathway](#), [Retinoic Acid Receptor Signaling Pathway](#), [Intracellular Steroid Hormone Receptor Signaling Pathway](#), [Steroid Hormone Mediated Signaling Pathway](#), [Ribonucleoprotein Complex Subunit Organization](#), [Ribosome Assembly](#)

Application Details

Application Notes: IF: 1:10~50. WB: 1:2000. WB: 1:2000. IHC-P: 1:100. IHC-P: 1:100

Restrictions: For Research Use only

Handling

Format: Liquid

Buffer: Purified polyclonal antibody supplied in PBS with 0.09 % (W/V) sodium azide.

Preservative: Sodium azide

Precaution of Use: This product contains Sodium azide: a POISONOUS AND HAZARDOUS SUBSTANCE which should be handled by trained staff only.

Storage: 4 °C,-20 °C

Storage Comment: ESR1/ER Antibody (Center) can be refrigerated at 2-8 °C for up to 6 months. For long term storage, place the at -20 °C.

Handling

Expiry Date: 6 months

Publications

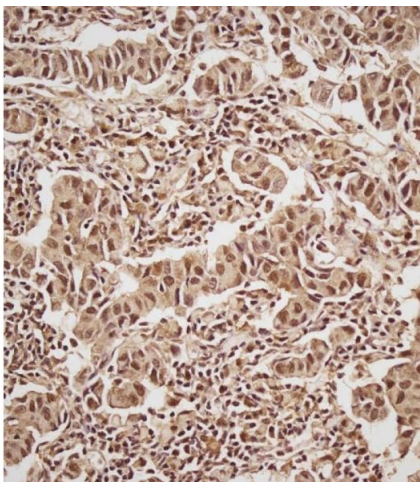
Product cited in: Zhu, Xu, Rashedi, Pavone, Kim, Woodruff, Burdette: "Human fallopian tube epithelium co-culture with murine ovarian follicles reveals crosstalk in the reproductive cycle." in: **Molecular human reproduction**, Vol. 22, Issue 11, pp. 756-767, (2018) ([PubMed](#)).

Wang, Zhou, Guan, Yu, Wang: " β -Estradiol antagonizes the inhibitory effects of caffeine in BMMSCs via the ER β -mediated cAMP-dependent PKA pathway." in: **Toxicology**, Vol. 394, pp. 1-10, (2018) ([PubMed](#)).

Arslan, Yu, Burdette, Pavone, Hope, Woodruff, Kim: "Novel three dimensional human endocervix cultures respond to 28-day hormone treatment." in: **Endocrinology**, Vol. 156, Issue 4, pp. 1602-9, (2015) ([PubMed](#)).

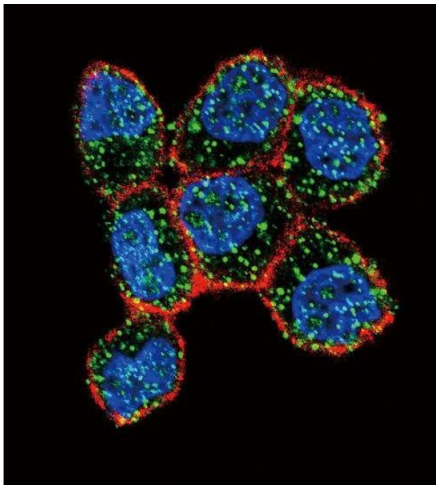
Bi, Yang, Yu, Zhao, Zhao, He, Jing, Wang, Huang: "Pregnancy serum facilitates hepatitis E virus replication in vitro." in: **The Journal of general virology**, Vol. 96, Issue Pt 5, pp. 1055-61, (2015) ([PubMed](#)).

Images



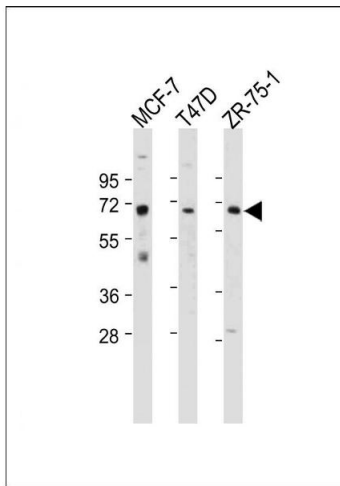
Immunohistochemistry (Paraffin-embedded Sections)

Image 1. Immunohistochemical analysis of (ABIN657470 and ABIN2846498) on paraffin-embedded Human breast carcinoma tissue. Tissue was fixed with formaldehyde at room temperature. Heat induced epitope retrieval was performed by EDTA buffer (pH 9.0). Samples were incubated with primary Antibody (1:100) for 1 hour at room temperature. Undiluted CRF Anti-Polyvalent HRP Polymer antibody was used as the secondary antibody.



Immunofluorescence

Image 2. Confocal immunofluorescent analysis of ESR1/ER Antibody (Center) (ABIN657470 and ABIN2846498) with ZR-75-1 cell followed by Alexa Fluor 488-conjugated goat anti-rabbit IgG (green). Actin filaments have been labeled with Alexa Fluor 555 phalloidin (red). DAPI was used to stain the cell nuclear (blue).



Western Blotting

Image 3. All lanes : Anti-ESR1/ER Antibody (Center) at 1:2000 dilution Lane 1: MCF-7 whole cell lysate Lane 2: T47D whole cell lysate Lane 3: ZR-75-1 whole cell lysate Lysates/proteins at 20 µg per lane. Secondary Goat Anti-Rabbit IgG, (H+L), Peroxidase conjugated at 1/10000 dilution. Predicted band size : 66 kDa Blocking/Dilution buffer: 5 % NFDM/TBST.

Please check the [product details page](#) for more images. Overall 5 images are available for ABIN657470.