

Datasheet for ABIN657471
anti-SYT6 antibody (C-Term)

2 Images

[Go to Product page](#)

Overview

Quantity:	400 µL
Target:	SYT6
Binding Specificity:	AA 483-510, C-Term
Reactivity:	Human
Host:	Rabbit
Clonality:	Polyclonal
Conjugate:	This SYT6 antibody is un-conjugated
Application:	Western Blotting (WB), Immunohistochemistry (Paraffin-embedded Sections) (IHC (p))

Product Details

Immunogen:	This SYT6 antibody is generated from rabbits immunized with a KLH conjugated synthetic peptide between 483-510 amino acids from the C-terminal region of human SYT6.
Clone:	RB33809
Isotype:	Ig Fraction
Purification:	This antibody is purified through a protein A column, followed by peptide affinity purification.

Target Details

Target:	SYT6
Alternative Name:	SYT6 (SYT6 Products)
Background:	Synaptotagmins, such as SYT6, share a common domain structure that includes a

Target Details

transmembrane domain and a cytoplasmic region composed of 2 C2 domains. Some synaptotagmins are involved in synaptic membrane fusion, while others have a more general function in endocytosis. For further information on synaptotagmins, see MIM 185605.

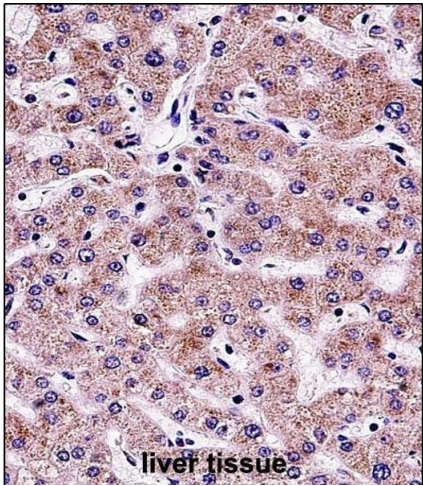
Molecular Weight:	57325
Gene ID:	148281
NCBI Accession:	NP_001257734 , NP_995320
UniProt:	Q5T7P8

Application Details

Application Notes:	WB: 1:1000. IHC-P: 1:10~50
Restrictions:	For Research Use only

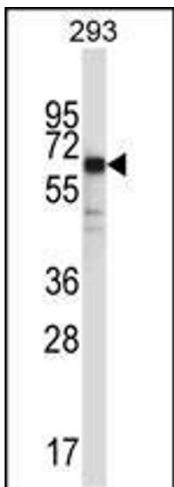
Handling

Format:	Liquid
Buffer:	Purified polyclonal antibody supplied in PBS with 0.09 % (W/V) sodium azide.
Preservative:	Sodium azide
Precaution of Use:	This product contains Sodium azide: a POISONOUS AND HAZARDOUS SUBSTANCE which should be handled by trained staff only.
Storage:	4 °C, -20 °C
Storage Comment:	SYT6 Antibody (C-term) can be refrigerated at 2-8 °C for up to 6 months. For long term storage, place the at -20 °C.
Expiry Date:	6 months



Immunohistochemistry (Paraffin-embedded Sections)

Image 1. SYT6 Antibody (C-term) (ABIN657471 and ABIN2846499) immunohistochemistry analysis in formalin fixed and paraffin embedded human liver tissue followed by peroxidase conjugation of the secondary antibody and DAB staining. This data demonstrates the use of SYT6 Antibody (C-term) for immunohistochemistry. Clinical relevance has not been evaluated.



Western Blotting

Image 2. SYT6 Antibody (C-term) (ABIN657471 and ABIN2846499) western blot analysis in 293 cell line lysates (35 µg/lane). This demonstrates the SYT6 antibody detected the SYT6 protein (arrow).