

Datasheet for ABIN657472
anti-IMPDH1 antibody (C-Term)[Go to Product page](#)

3 Images

Overview

Quantity:	400 µL
Target:	IMPDH1
Binding Specificity:	AA 487-514, C-Term
Reactivity:	Human
Host:	Rabbit
Clonality:	Polyclonal
Application:	Western Blotting (WB), Immunofluorescence (IF), Immunohistochemistry (Paraffin-embedded Sections) (IHC (p))

Product Details

Immunogen:	This IMPDH1 antibody is generated from rabbits immunized with a KLH conjugated synthetic peptide between 487-514 amino acids from the C-terminal region of human IMPDH1.
Clone:	RB33810
Isotype:	Ig Fraction
Predicted Reactivity:	B, M, Rat
Purification:	This antibody is purified through a protein A column, followed by peptide affinity purification.

Target Details

Target:	IMPDH1
Alternative Name:	IMPDH1 (IMPDH1 Products)

Target Details

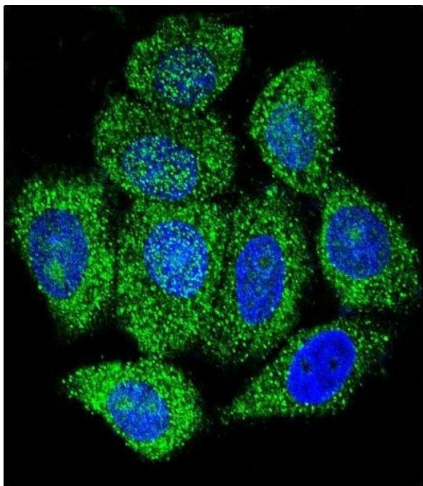
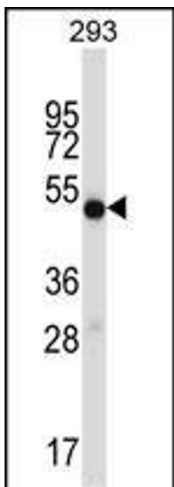
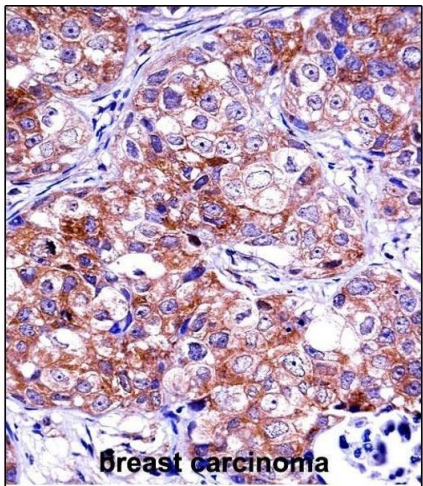
Background:	The protein encoded by this gene acts as a homotetramer to regulate cell growth. The encoded protein is an enzyme that catalyzes the synthesis of xanthine monophosphate (XMP) from inosine-5'-monophosphate (IMP). This is the rate-limiting step in the de novo synthesis of guanine nucleotides. Defects in this gene are a cause of retinitis pigmentosa type 10 (RP10). Several transcript variants encoding different isoforms have been found for this gene.
Molecular Weight:	55406
Gene ID:	3614
NCBI Accession:	NP_000874 , NP_001096075 , NP_001136045 , NP_001136046 , NP_001136047 , NP_001136048 , NP_899066
UniProt:	P20839
Pathways:	Ribonucleoside Biosynthetic Process

Application Details

Application Notes:	IF: 1:10~50. WB: 1:1000. IHC-P: 1:10~50
Restrictions:	For Research Use only

Handling

Format:	Liquid
Buffer:	Purified polyclonal antibody supplied in PBS with 0.09 % (W/V) sodium azide.
Preservative:	Sodium azide
Precaution of Use:	This product contains Sodium azide: a POISONOUS AND HAZARDOUS SUBSTANCE which should be handled by trained staff only.
Storage:	4 °C,-20 °C
Storage Comment:	IMPDH1 Antibody (C-term) can be refrigerated at 2-8 °C for up to 6 months. For long term storage, place the at -20 °C.
Expiry Date:	6 months



Immunohistochemistry (Paraffin-embedded Sections)

Image 1. IDH1 Antibody (C-term) ((ABIN657472 and ABIN2846500))immunohistochemistry analysis in formalin fixed and paraffin embedded human breast carcinoma followed by peroxidase conjugation of the secondary antibody and DAB staining.This data demonstrates the use of IDH1 Antibody (C-term) for immunohistochemistry. Clinical relevance has not been evaluated.

Western Blotting

Image 2. IDH1 Antibody (C-term) (ABIN657472 and ABIN2846500) western blot analysis in 293 cell line lysates (35 µg/lane).This demonstrates the IDH1 antibody detected the IDH1 protein (arrow).

Immunofluorescence

Image 3. Confocal immunofluorescent analysis of IDH1 Antibody (C-term) (ABIN657472 and ABIN2846500) with HeLa cell followed by Alexa Fluor 488-conjugated goat anti-rabbit IgG (green). DAPI was used to stain the cell nuclei (blue).