

Datasheet for ABIN657475
anti-ALPPL2 antibody (N-Term)[Go to Product page](#)

2 Images

Overview

Quantity:	400 µL
Target:	ALPPL2
Binding Specificity:	AA 58-86, N-Term
Reactivity:	Human
Host:	Rabbit
Clonality:	Polyclonal
Conjugate:	This ALPPL2 antibody is un-conjugated
Application:	Western Blotting (WB), Immunohistochemistry (Paraffin-embedded Sections) (IHC (p))

Product Details

Immunogen:	This ALPPL2 antibody is generated from rabbits immunized with a KLH conjugated synthetic peptide between 58-86 amino acids from the N-terminal region of human ALPPL2.
Clone:	RB33842
Isotype:	Ig Fraction
Purification:	This antibody is purified through a protein A column, followed by peptide affinity purification.

Target Details

Target:	ALPPL2
Alternative Name:	ALPPL2 (ALPPL2 Products)
Background:	There are at least four distinct but related alkaline phosphatases: intestinal, placental, placental-

Target Details

like, and liver/bone/kidney (tissue non-specific). The product of this gene is a membrane bound glycosylated enzyme, localized to testis, thymus and certain germ cell tumors, that is closely related to both the placental and intestinal forms of alkaline phosphatase.

Molecular Weight: 57377

Gene ID: 251

NCBI Accession: [NP_112603](#)

UniProt: [P10696](#)

Application Details

Application Notes: WB: 1:1000. IHC-P: 1:10~50

Restrictions: For Research Use only

Handling

Format: Liquid

Buffer: Purified polyclonal antibody supplied in PBS with 0.09 % (W/V) sodium azide.

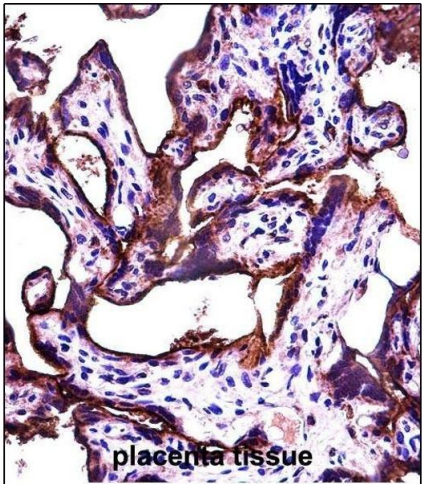
Preservative: Sodium azide

Precaution of Use: This product contains Sodium azide: a POISONOUS AND HAZARDOUS SUBSTANCE which should be handled by trained staff only.

Storage: 4 °C, -20 °C

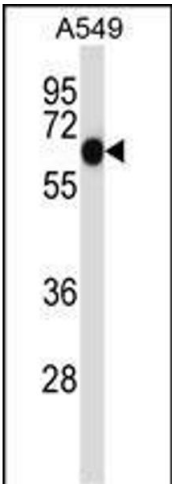
Storage Comment: AMACR Antibody can be stored at 4 °C, for long term storage, store at -20 °C.

Expiry Date: 6 months



Immunohistochemistry (Paraffin-embedded Sections)

Image 1. ALL2 Antibody (N-term) (ABIN657475 and ABIN2846503) immunohistochemistry analysis in formalin fixed and paraffin embedded human placenta tissue followed by peroxidase conjugation of the secondary antibody and DAB staining. This data demonstrates the use of ALL2 Antibody (N-term) for immunohistochemistry. Clinical relevance has not been evaluated.



Western Blotting

Image 2. ALL2 Antibody (N-term) (ABIN657475 and ABIN2846503) western blot analysis in A549 cell line lysates (35 µg/lane). This demonstrates the ALL2 antibody detected the ALL2 protein (arrow).