

Datasheet for ABIN657476  
**anti-PLAP antibody (AA 282-309)**[Go to Product page](#)

## 2 Images

## Overview

Quantity:	400 µL
Target:	PLAP (ALPP)
Binding Specificity:	AA 282-309
Reactivity:	Human
Host:	Rabbit
Clonality:	Polyclonal
Conjugate:	This PLAP antibody is un-conjugated
Application:	Western Blotting (WB), Immunohistochemistry (Paraffin-embedded Sections) (IHC (p))

## Product Details

Immunogen:	This ALPP antibody is generated from rabbits immunized with a KLH conjugated synthetic peptide between 282-309 amino acids from the Central region of human ALPP.
Clone:	RB33849
Isotype:	Ig Fraction
Purification:	This antibody is purified through a protein A column, followed by peptide affinity purification.

## Target Details

Target:	PLAP (ALPP)
Alternative Name:	ALPP ( <a href="#">ALPP Products</a> )
Background:	There are at least four distinct but related alkaline phosphatases: intestinal, placental, placental-

## Target Details

like, and liver/bone/kidney (tissue non-specific). The first three are located together on chromosome 2 while the tissue non-specific form is located on chromosome 1. The product of this gene is a membrane bound glycosylated enzyme, also referred to as the heat stable form, that is expressed primarily in the placenta although it is closely related to the intestinal form of the enzyme as well as to the placental-like form. The coding sequence for this form of alkaline phosphatase is unique in that the 3' untranslated region contains multiple copies of an Alu family repeat. In addition, this gene is polymorphic and three common alleles (type 1, type 2 and type 3) for this form of alkaline phosphatase have been well characterized.

Molecular Weight: 57954

Gene ID: 250

NCBI Accession: [NP\\_001623](#)

UniProt: [P05187](#)

## Application Details

Application Notes: WB: 1:1000. IHC-P: 1:10~50

Restrictions: For Research Use only

## Handling

Format: Liquid

Buffer: Purified polyclonal antibody supplied in PBS with 0.09 % (W/V) sodium azide.

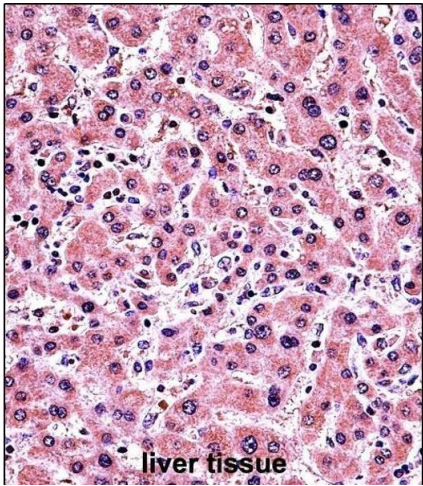
Preservative: Sodium azide

Precaution of Use: This product contains Sodium azide: a POISONOUS AND HAZARDOUS SUBSTANCE which should be handled by trained staff only.

Storage: 4 °C,-20 °C

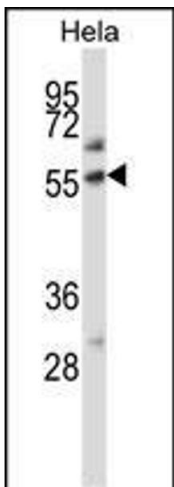
Storage Comment: ALPP Antibody (Center) can be refrigerated at 2-8 °C for up to 6 months. For long term storage, place the at -20 °C.

Expiry Date: 6 months



**Immunohistochemistry (Paraffin-embedded Sections)**

**Image 1.** AL Antibody (Center) (ABIN657476 and ABIN2846504) immunohistochemistry analysis in formalin fixed and paraffin embedded human liver tissue followed by peroxidase conjugation of the secondary antibody and DAB staining. This data demonstrates the use of AL Antibody (Center) for immunohistochemistry. Clinical relevance has not been evaluated.



**Western Blotting**

**Image 2.** AL Antibody (Center) (ABIN657476 and ABIN2846504) western blot analysis in Hela cell line lysates (35 µg/lane). This demonstrates the AL antibody detected the AL protein (arrow).