

Datasheet for ABIN657480
anti-RNASE3 antibody (AA 124-151)[Go to Product page](#)

3 Images

Overview

Quantity:	400 µL
Target:	RNASE3 (ECP)
Binding Specificity:	AA 124-151
Reactivity:	Human
Host:	Rabbit
Clonality:	Polyclonal
Application:	Western Blotting (WB), Immunofluorescence (IF)

Product Details

Immunogen:	This RNASE3 antibody is generated from rabbits immunized with a KLH conjugated synthetic peptide between 124-151 amino acids of human RNASE3.
Clone:	RB30251
Isotype:	IgG
Purification:	This antibody is purified through a protein A column, followed by peptide affinity purification.

Target Details

Target:	RNASE3 (ECP)
Alternative Name:	RNASE3 (ECP Products)
Background:	Cytotoxin and helminthotoxin with low-efficiency ribonuclease activity. Possesses a wide variety of biological activities. Exhibits antibacterial activity.

Target Details

Molecular Weight:	18385
Gene ID:	6037
NCBI Accession:	NP_002926
UniProt:	P12724

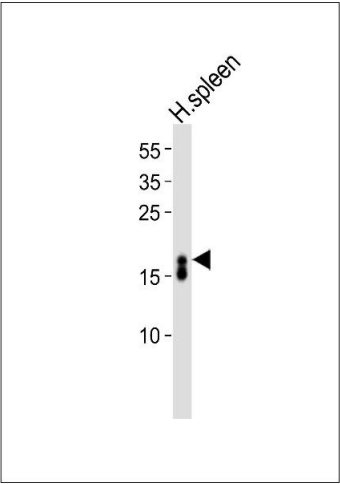
Application Details

Application Notes:	IF: 1:10~50. WB: 1:1000. WB: 1:1000
Restrictions:	For Research Use only

Handling

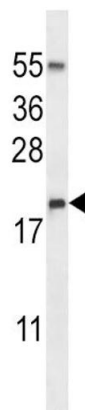
Format:	Liquid
Buffer:	Purified polyclonal antibody supplied in PBS with 0.09 % (W/V) sodium azide.
Preservative:	Sodium azide
Precaution of Use:	This product contains Sodium azide: a POISONOUS AND HAZARDOUS SUBSTANCE which should be handled by trained staff only.
Storage:	4 °C,-20 °C
Storage Comment:	RNASE3 Antibody (C-term) can be refrigerated at 2-8 °C for up to 6 months. For long term storage, place the at -20 °C.
Expiry Date:	6 months

Images



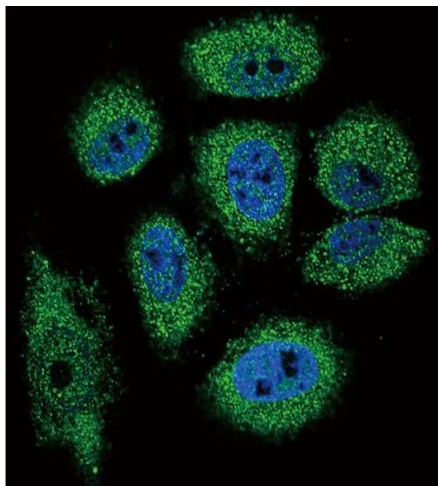
Western Blotting

Image 1. Western blot analysis of lysate from human spleen tissue lysate, using RNASE3 Antibody (C-term) (ABIN657480 and ABIN2846507). (ABIN657480 and ABIN2846507) was diluted at 1:1000. A goat anti-rabbit IgG H&L(HRP) at 1:10000 dilution was used as the secondary antibody. Lysate at 35 µg.



Western Blotting

Image 2. RNASE3 Antibody (C-term) (ABIN657480 and ABIN2846507) western blot analysis in NCI- cell line lysates (35 µg/lane). This demonstrates the RNASE3 antibody detected the RNASE3 protein (arrow).



Immunofluorescence

Image 3. Confocal immunofluorescent analysis of RNASE3 Antibody (C-term) (ABIN657480 and ABIN2846507) with NCI- cell followed by Alexa Fluor 488-conjugated goat anti-rabbit IgG (green). DAPI was used to stain the cell nuclear (blue).