

Datasheet for ABIN657485

anti-Sphingomyelin Synthase 1 antibody (N-Term)**2** Images[Go to Product page](#)

Overview

Quantity:	400 µL
Target:	Sphingomyelin Synthase 1 (SGMS1)
Binding Specificity:	AA 24-53, N-Term
Reactivity:	Human
Host:	Rabbit
Clonality:	Polyclonal
Conjugate:	This Sphingomyelin Synthase 1 antibody is un-conjugated
Application:	Western Blotting (WB), Immunohistochemistry (Paraffin-embedded Sections) (IHC (p))

Product Details

Immunogen:	This SGMS1 antibody is generated from rabbits immunized with a KLH conjugated synthetic peptide between 24-53 amino acids from the N-terminal region of human SGMS1.
Clone:	RB32319
Isotype:	Ig Fraction
Predicted Reactivity:	M
Purification:	This antibody is purified through a protein A column, followed by peptide affinity purification.

Target Details

Target:	Sphingomyelin Synthase 1 (SGMS1)
Alternative Name:	SGMS1 (SGMS1 Products)

Target Details

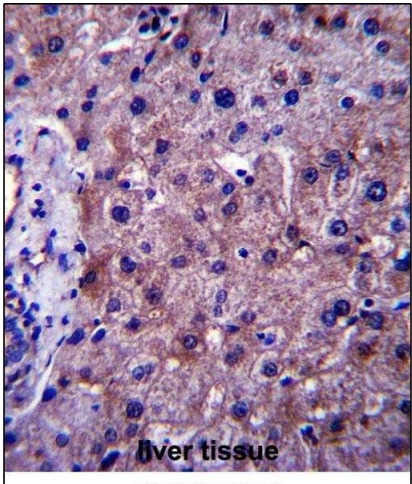
Background:	The protein encoded by this gene is predicted to be a five-pass transmembrane protein. This gene may be predominately expressed in brain.
Molecular Weight:	48617
Gene ID:	259230
NCBI Accession:	NP_671512
UniProt:	Q86VZ5
Pathways:	Cellular Response to Molecule of Bacterial Origin

Application Details

Application Notes:	WB: 1:1000. IHC-P: 1:10~50
Restrictions:	For Research Use only

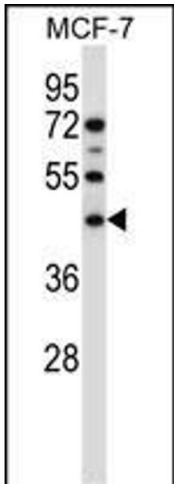
Handling

Format:	Liquid
Buffer:	Purified polyclonal antibody supplied in PBS with 0.09 % (W/V) sodium azide.
Preservative:	Sodium azide
Precaution of Use:	This product contains Sodium azide: a POISONOUS AND HAZARDOUS SUBSTANCE which should be handled by trained staff only.
Storage:	4 °C,-20 °C
Storage Comment:	SGMS1 Antibody (N-term) can be refrigerated at 2-8 °C for up to 6 months. For long term storage, place the at -20 °C.
Expiry Date:	6 months



Immunohistochemistry (Paraffin-embedded Sections)

Image 1. SGMS1 Antibody (N-term) (ABIN657485 and ABIN2846514) immunohistochemistry analysis in formalin fixed and paraffin embedded human liver tissue followed by peroxidase conjugation of the secondary antibody and DAB staining. This data demonstrates the use of SGMS1 Antibody (N-term) for immunohistochemistry. Clinical relevance has not been evaluated.



Western Blotting

Image 2. SGMS1 Antibody (N-term) (ABIN657485 and ABIN2846514) western blot analysis in MCF-7 cell line lysates (35 µg/lane). This demonstrates the SGMS1 antibody detected the SGMS1 protein (arrow).