

Datasheet for ABIN657487
anti-ZFX antibody (AA 288-317)[Go to Product page](#)

1 Image

Overview

Quantity:	400 µL
Target:	ZFX
Binding Specificity:	AA 288-317
Reactivity:	Human
Host:	Rabbit
Clonality:	Polyclonal
Application:	Western Blotting (WB)

Product Details

Immunogen:	This ZFX antibody is generated from rabbits immunized with a KLH conjugated synthetic peptide between 288-317 amino acids from the Central region of human ZFX.
Clone:	RB32448
Isotype:	Ig Fraction
Purification:	This antibody is purified through a protein A column, followed by peptide affinity purification.

Target Details

Target:	ZFX
Alternative Name:	ZFX (ZFX Products)
Background:	This gene on the X chromosome is structurally similar to a related gene on the Y chromosome. It encodes a member of the krueppel C2H2-type zinc-finger protein family. The full-length protein contains an acidic transcriptional activation domain (AD), a nuclear localization

Target Details

sequence (NLS) and a DNA binding domain (DBD) consisting of 13 C2H2-type zinc fingers. Studies in mouse embryonic and adult hematopoietic stem cells showed that this gene was required as a transcriptional regulator for self-renewal of both stem cell types, but it was dispensable for growth and differentiation of their progeny. Multiple alternatively spliced transcript variants encoding different isoforms have been identified, but the full-length nature of some variants has not been determined.

Molecular Weight: 90522

Gene ID: 7543

NCBI Accession: [NP_001171555](#), [NP_001171556](#), [NP_001171557](#), [NP_003401](#)

UniProt: [P17010](#)

Application Details

Application Notes: WB: 1:1000

Restrictions: For Research Use only

Handling

Format: Liquid

Buffer: Purified polyclonal antibody supplied in PBS with 0.09 % (W/V) sodium azide.

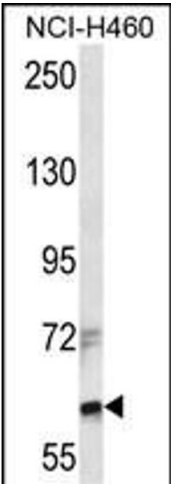
Preservative: Sodium azide

Precaution of Use: This product contains Sodium azide: a POISONOUS AND HAZARDOUS SUBSTANCE which should be handled by trained staff only.

Storage: 4 °C, -20 °C

Storage Comment: ZFX Antibody (Center) can be refrigerated at 2-8 °C for up to 6 months. For long term storage, place the at -20 °C.

Expiry Date: 6 months



Western Blotting

Image 1. ZFX Antibody (Center) (ABIN657487 and ABIN2846515) western blot analysis in NCI- cell line lysates (35 µg/lane).This demonstrates the ZFX antibody detected the ZFX protein (arrow).