



Datasheet for ABIN657503
anti-RIBC2 antibody (N-Term)



[Go to Product page](#)

2 Images

Overview

Quantity:	400 µL
Target:	RIBC2
Binding Specificity:	AA 64-93, N-Term
Reactivity:	Human
Host:	Rabbit
Clonality:	Polyclonal
Conjugate:	This RIBC2 antibody is un-conjugated
Application:	Western Blotting (WB), Immunohistochemistry (Paraffin-embedded Sections) (IHC (p))

Product Details

Immunogen:	This RIBC2 antibody is generated from rabbits immunized with a KLH conjugated synthetic peptide between 64-93 amino acids from the N-terminal region of human RIBC2.
Clone:	RB32681
Isotype:	Ig Fraction
Purification:	This antibody is purified through a protein A column, followed by peptide affinity purification.

Target Details

Target:	RIBC2
Alternative Name:	RIBC2 (RIBC2 Products)
Background:	The function of this protein remains unknown.

Target Details

Molecular Weight:	45427
Gene ID:	26150
NCBI Accession:	NP_056468
UniProt:	Q9H4K1

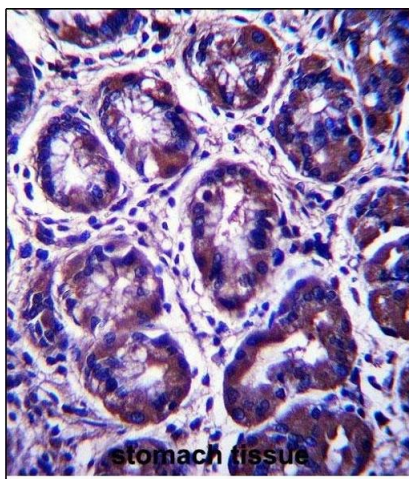
Application Details

Application Notes:	WB: 1:1000. IHC-P: 1:10~50
Restrictions:	For Research Use only

Handling

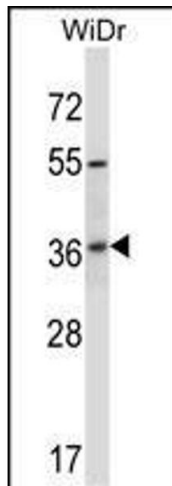
Format:	Liquid
Buffer:	Purified polyclonal antibody supplied in PBS with 0.09 % (W/V) sodium azide.
Preservative:	Sodium azide
Precaution of Use:	This product contains Sodium azide: a POISONOUS AND HAZARDOUS SUBSTANCE which should be handled by trained staff only.
Storage:	4 °C,-20 °C
Storage Comment:	RIBC2 Antibody (N-term) can be refrigerated at 2-8 °C for up to 6 months. For long term storage, place the at -20 °C.
Expiry Date:	6 months

Images



Immunohistochemistry (Paraffin-embedded Sections)

Image 1. RIBC2 Antibody (N-term) (ABIN657503 and ABIN2846528) immunohistochemistry analysis in formalin fixed and paraffin embedded human stomach tissue followed by peroxidase conjugation of the secondary antibody and DAB staining. This data demonstrates the use of RIBC2 Antibody (N-term) for immunohistochemistry. Clinical relevance has not been evaluated.



Western Blotting

Image 2. RIBC2 Antibody (N-term) (ABIN657503 and ABIN2846528) western blot analysis in WiDr cell line lysates (35 µg/lane). This demonstrates the RIBC2 antibody detected the RIBC2 protein (arrow).