

Datasheet for ABIN657504  
**anti-EMP2 antibody (C-Term)**[Go to Product page](#)

2 Images

1 Publication

## Overview

Quantity:	400 µL
Target:	EMP2
Binding Specificity:	AA 100-129, C-Term
Reactivity:	Mouse
Host:	Rabbit
Clonality:	Polyclonal
Application:	Western Blotting (WB), Immunohistochemistry (Paraffin-embedded Sections) (IHC (p))

## Product Details

Immunogen:	This EMP2 antibody is generated from rabbits immunized with a KLH conjugated synthetic peptide between 100-129 amino acids from the C-terminal region of human EMP2.
Clone:	RB32736
Isotype:	Ig Fraction
Purification:	This antibody is purified through a protein A column, followed by peptide affinity purification.

## Target Details

Target:	EMP2
Alternative Name:	EMP2 ( <a href="#">EMP2 Products</a> )
Background:	The function of this protein remains unknown.
Molecular Weight:	19199

## Target Details

Gene ID:	2013
NCBI Accession:	<a href="#">NP_001415</a>
UniProt:	<a href="#">P54851</a>

## Application Details

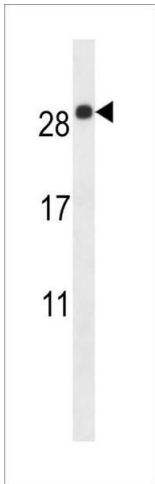
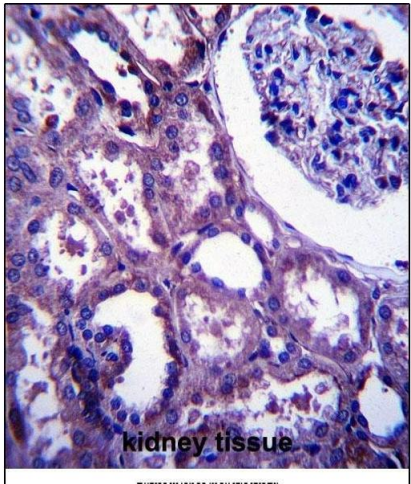
Application Notes:	WB: 1:1000. IHC-P: 1:10~50
Restrictions:	For Research Use only

## Handling

Format:	Liquid
Buffer:	Purified polyclonal antibody supplied in PBS with 0.09 % (W/V) sodium azide.
Preservative:	Sodium azide
Precaution of Use:	This product contains Sodium azide: a POISONOUS AND HAZARDOUS SUBSTANCE which should be handled by trained staff only.
Storage:	4 °C,-20 °C
Storage Comment:	EMP2 Antibody (C-term) can be refrigerated at 2-8 °C for up to 6 months. For long term storage, place the at -20 °C.
Expiry Date:	6 months

## Publications

Product cited in:	<p>Wu, Ma, Shan, Zhou, Li: "High expression of matrix metalloproteinases 16 is associated with the aggressive malignant behavior and poor survival outcome in colorectal carcinoma." in: <b>Scientific reports</b>, Vol. 7, pp. 46531, (2017) (<a href="#">PubMed</a>).</p> <p>Shen, Wang, Yu, Zhang, Qin: "MMP16 promotes tumor metastasis and indicates poor prognosis in hepatocellular carcinoma." in: <b>Oncotarget</b>, Vol. 8, Issue 42, pp. 72197-72204, (2017) (<a href="#">PubMed</a>).</p>
-------------------	-------------------------------------------------------------------------------------------------------------------------------------------------------------------------------------------------------------------------------------------------------------------------------------------------------------------------------------------------------------------------------------------------------------------------------------------------------------------------------------------------------



**Immunohistochemistry (Paraffin-embedded Sections)**

**Image 1.** E Antibody (C-term) (ABIN657504 and ABIN2846529) immunohistochemistry analysis in formalin fixed and paraffin embedded human kidney tissue followed by peroxidase conjugation of the secondary antibody and DAB staining. This data demonstrates the use of E Antibody (C-term) for immunohistochemistry. Clinical relevance has not been evaluated.

**Western Blotting**

**Image 2.** E Antibody (C-term) (ABIN657504 and ABIN2846529) western blot analysis in mouse lung tissue lysates (35 µg/lane). This demonstrates the E antibody detected the E protein (arrow).