



Datasheet for ABIN657509
anti-CHSY1 antibody (AA 504-533)



[Go to Product page](#)

3 Images

Overview

Quantity:	400 µL
Target:	CHSY1
Binding Specificity:	AA 504-533
Reactivity:	Human, Mouse
Host:	Rabbit
Clonality:	Polyclonal
Conjugate:	This CHSY1 antibody is un-conjugated
Application:	Western Blotting (WB), Flow Cytometry (FACS)

Product Details

Immunogen:	This CHSY1 antibody is generated from rabbits immunized with a KLH conjugated synthetic peptide between 504-533 amino acids from the Central region of human CHSY1.
Clone:	RB32819
Isotype:	Ig Fraction
Purification:	This antibody is purified through a protein A column, followed by peptide affinity purification.

Target Details

Target:	CHSY1
Alternative Name:	CHSY1 (CHSY1 Products)
Background:	CHSY1 synthesizes chondroitin sulfate, a glycosaminoglycan expressed on the surface of most

Target Details

cells and in extracellular matrices. Glycosaminoglycan chains are covalently linked to a wide range of core protein families and regulate many biologic processes, including cell proliferation and recognition, extracellular matrix deposition, and morphogenesis.[supplied by OMIM].

Molecular Weight: 91784

Gene ID: 22856

NCBI Accession: [NP_055733](#)

UniProt: [Q86X52](#)

Pathways: [Glycosaminoglycan Metabolic Process](#)

Application Details

Application Notes: WB: 1:1000. WB: 1:1000. FC: 1:10~50

Restrictions: For Research Use only

Handling

Format: Liquid

Buffer: Purified polyclonal antibody supplied in PBS with 0.09 % (W/V) sodium azide.

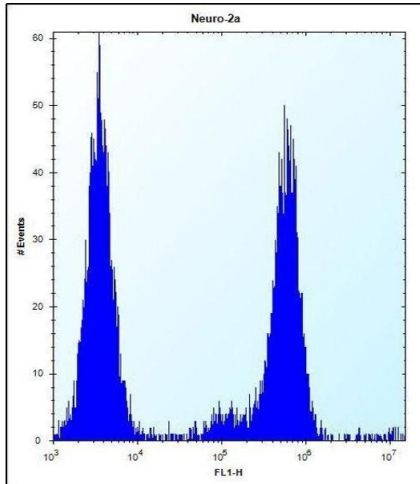
Preservative: Sodium azide

Precaution of Use: This product contains Sodium azide: a POISONOUS AND HAZARDOUS SUBSTANCE which should be handled by trained staff only.

Storage: 4 °C,-20 °C

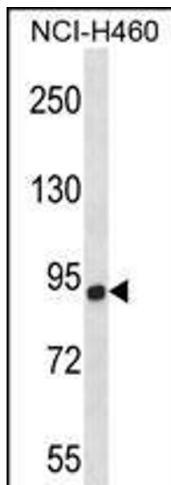
Storage Comment: CHSY1 Antibody (Center) can be refrigerated at 2-8 °C for up to 6 months. For long term storage, place the at -20 °C.

Expiry Date: 6 months



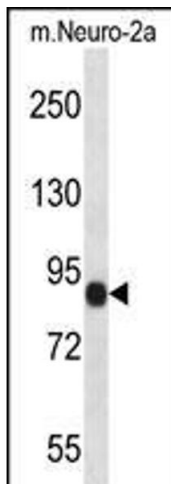
Flow Cytometry

Image 1. CHSY1 Antibody (Center) (ABIN657509 and ABIN2846533) flow cytometric analysis of Neuro-2a cells (right histogram) compared to a negative control cell (left histogram). FITC-conjugated donkey-anti-rabbit secondary antibodies were used for the analysis.



Western Blotting

Image 2. CHSY1 Antibody (Center) (ABIN657509 and ABIN2846533) western blot analysis in NCI- cell line lysates (35 μ g/lane). This demonstrates the CHSY1 antibody detected the CHSY1 protein (arrow).



Western Blotting

Image 3. CHSY1 Antibody (Center) (ABIN657509 and ABIN2846533) western blot analysis in mouse Neuro-2a cell line lysates (35 μ g/lane). This demonstrates the CHSY1 antibody detected the CHSY1 protein (arrow).