

Datasheet for ABIN657519
anti-SIDT2 antibody (AA 418-447)



[Go to Product page](#)

2 Images

1 Publication

Overview

Quantity:	400 µL
Target:	SIDT2
Binding Specificity:	AA 418-447
Reactivity:	Human, Mouse
Host:	Rabbit
Clonality:	Polyclonal
Conjugate:	This SIDT2 antibody is un-conjugated
Application:	Western Blotting (WB)

Product Details

Immunogen:	This SIDT2 antibody is generated from rabbits immunized with a KLH conjugated synthetic peptide between 418-447 amino acids from the Central region of human SIDT2.
Clone:	RB32903
Isotype:	Ig Fraction
Predicted Reactivity:	Rat
Purification:	This antibody is purified through a protein A column, followed by peptide affinity purification.

Target Details

Target:	SIDT2
Alternative Name:	SIDT2 (SIDT2 Products)

Target Details

Background:	SIDT2 belongs to the SID1 family. It is a multi-pass membrane protein. The exact function of SIDT2 remains unknown.
Molecular Weight:	94454
Gene ID:	51092
NCBI Accession:	NP_001035545
UniProt:	Q8NBJ9

Application Details

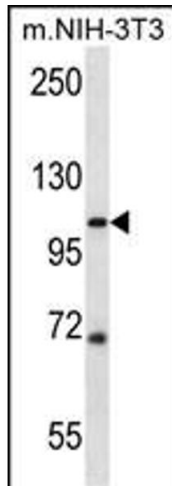
Application Notes:	WB: 1:1000. WB: 1:1000
Restrictions:	For Research Use only

Handling

Format:	Liquid
Buffer:	Purified polyclonal antibody supplied in PBS with 0.09 % (W/V) sodium azide.
Preservative:	Sodium azide
Precaution of Use:	This product contains Sodium azide: a POISONOUS AND HAZARDOUS SUBSTANCE which should be handled by trained staff only.
Storage:	4 °C,-20 °C
Storage Comment:	SIDT2 Antibody (Center) can be refrigerated at 2-8 °C for up to 6 months. For long term storage, place the at -20 °C.
Expiry Date:	6 months

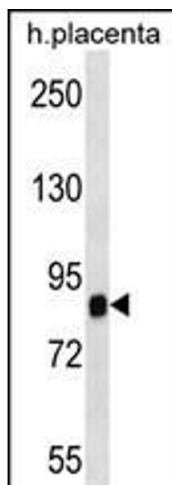
Publications

Product cited in:	Gao, Zhang, Yu, Tan, Wang: "Spontaneous nonalcoholic fatty liver disease and ER stress in Sidt2 deficiency mice." in: Biochemical and biophysical research communications , Vol. 476, Issue 4, pp. 326-32, (2016) (PubMed).
-------------------	--



Western Blotting

Image 1. SIDT2 Antibody (Center) (ABIN657519 and ABIN2846541) western blot analysis in mouse NIH-3T3 cell line lysates (35 µg/lane). This demonstrates the SIDT2 antibody detected the SIDT2 protein (arrow).



Western Blotting

Image 2. SIDT2 Antibody (Center) (ABIN657519 and ABIN2846541) western blot analysis in human placenta tissue lysates (35 µg/lane). This demonstrates the SIDT2 antibody detected the SIDT2 protein (arrow).