

Datasheet for ABIN657520
anti-LIMS2 antibody (C-Term)[Go to Product page](#)

1 Image

Overview

Quantity:	400 µL
Target:	LIMS2
Binding Specificity:	AA 309-337, C-Term
Reactivity:	Mouse
Host:	Rabbit
Clonality:	Polyclonal
Conjugate:	This LIMS2 antibody is un-conjugated
Application:	Western Blotting (WB)

Product Details

Immunogen:	This LIMS2 antibody is generated from rabbits immunized with a KLH conjugated synthetic peptide between 309-337 amino acids from the C-terminal region of human LIMS2.
Clone:	RB32909
Isotype:	Ig Fraction
Purification:	This antibody is purified through a protein A column, followed by peptide affinity purification.

Target Details

Target:	LIMS2
Alternative Name:	LIMS2 (LIMS2 Products)
Background:	LIMS2 is a focal adhesion protein that associates with integrin-linked kinase (ILK, MIM 602366),

Target Details

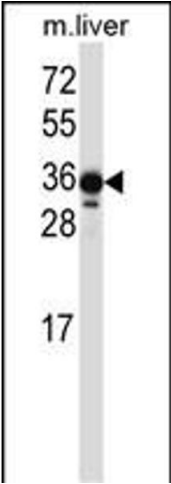
	a multidomain protein that mediates multiple protein-protein interactions at adhesion sites between cells and the extracellular matrix (ECM).[supplied by OMIM].
Molecular Weight:	38916
Gene ID:	55679
NCBI Accession:	NP_001129509 , NP_001154875 , NP_001154876 , NP_001243471 , NP_060450
UniProt:	Q7Z4I7
Pathways:	Cell-Cell Junction Organization

Application Details

Application Notes:	WB: 1:1000
Restrictions:	For Research Use only

Handling

Format:	Liquid
Buffer:	Purified polyclonal antibody supplied in PBS with 0.09 % (W/V) sodium azide.
Preservative:	Sodium azide
Precaution of Use:	This product contains Sodium azide: a POISONOUS AND HAZARDOUS SUBSTANCE which should be handled by trained staff only.
Storage:	4 °C,-20 °C
Storage Comment:	LIMS2 Antibody (C-term) can be refrigerated at 2-8 °C for up to 6 months. For long term storage, place the at -20 °C.
Expiry Date:	6 months



Western Blotting

Image 1. LIMS2 Antibody (C-term) (ABIN657520 and ABIN2846542) western blot analysis in mouse liver tissue lysates (35 µg/lane). This demonstrates the LIMS2 antibody detected the LIMS2 protein (arrow).