



[Go to Product page](#)

Datasheet for ABIN657521  
**anti-PCNXL4 antibody (AA 789-817)**

1 Image

### Overview

|                      |                       |
|----------------------|-----------------------|
| Quantity:            | 400 µL                |
| Target:              | PCNXL4                |
| Binding Specificity: | AA 789-817            |
| Reactivity:          | Human                 |
| Host:                | Rabbit                |
| Clonality:           | Polyclonal            |
| Application:         | Western Blotting (WB) |

### Product Details

|               |   |
|---------------|---|
| Immunogen:    | This C14orf135 antibody is generated from rabbits immunized with a KLH conjugated synthetic peptide between 789-817 amino acids from the Central region of human C14orf135. |
| Clone:        | RB32918   |
| Isotype:      | Ig Fraction   |
| Purification: | This antibody is purified through a protein A column, followed by peptide affinity purification.  |

### Target Details

|                   |   |
|-------------------|---|
| Target:           | PCNXL4  |
| Alternative Name: | C14orf135 ( <a href="#">PCNXL4 Products</a> ) |
| Background:       | The function of this protein remains unknown. |
| Molecular Weight: | 132702  |

## Target Details

Gene ID: 64430

NCBI Accession: [NP\\_071940](#)

UniProt: [Q63HM2](#)

## Application Details

Application Notes: WB: 1:1000

Restrictions: For Research Use only

## Handling

Format: Liquid

Buffer: Purified polyclonal antibody supplied in PBS with 0.09 % (W/V) sodium azide.

Preservative: Sodium azide

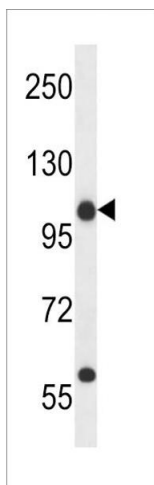
Precaution of Use: This product contains Sodium azide: a POISONOUS AND HAZARDOUS SUBSTANCE which should be handled by trained staff only.

Storage: 4 °C, -20 °C

Storage Comment: C14orf135 Antibody (Center) can be refrigerated at 2-8 °C for up to 6 months. For long term storage, place the at -20 °C.

Expiry Date: 6 months

## Images



### Western Blotting

**Image 1.** C14orf135 Antibody (Center) (ABIN657521 and ABIN2846543) western blot analysis in 293 cell line lysates (35 µg/lane). This demonstrates the C14orf135 antibody detected the C14orf135 protein (arrow).