



[Go to Product page](#)

Datasheet for ABIN657526

## anti-PDZD4 antibody (N-Term)

### 2 Images

#### Overview

Quantity:	400 µL
Target:	PDZD4
Binding Specificity:	AA 113-141, N-Term
Reactivity:	Human, Mouse
Host:	Rabbit
Clonality:	Polyclonal
Conjugate:	This PDZD4 antibody is un-conjugated
Application:	Western Blotting (WB)

#### Product Details

Immunogen:	This PDZD4 antibody is generated from rabbits immunized with a KLH conjugated synthetic peptide between 113-141 amino acids from the N-terminal region of human PDZD4.
Clone:	RB32936
Isotype:	Ig Fraction
Purification:	This antibody is purified through a protein A column, followed by peptide affinity purification.

#### Target Details

Target:	PDZD4
Alternative Name:	PDZD4 ( <a href="#">PDZD4 Products</a> )
Background:	The function of this protein remains unknown.

## Target Details

Molecular Weight:	86171
Gene ID:	57595
NCBI Accession:	<a href="#">NP_115901</a>
UniProt:	<a href="#">Q76G19</a>

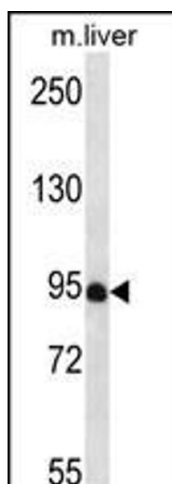
## Application Details

Application Notes:	WB: 1:1000. WB: 1:1000
Restrictions:	For Research Use only

## Handling

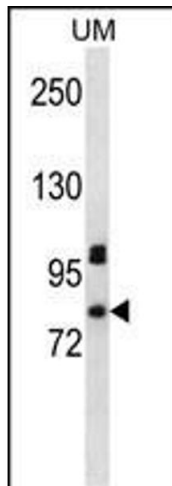
Format:	Liquid
Buffer:	Purified polyclonal antibody supplied in PBS with 0.09 % (W/V) sodium azide.
Preservative:	Sodium azide
Precaution of Use:	This product contains Sodium azide: a POISONOUS AND HAZARDOUS SUBSTANCE which should be handled by trained staff only.
Storage:	4 °C,-20 °C
Storage Comment:	PDZD4 Antibody (N-term) can be refrigerated at 2-8 °C for up to 6 months. For long term storage, place the at -20 °C.
Expiry Date:	6 months

## Images



### Western Blotting

**Image 1.** PDZD4 Antibody (N-term) (ABIN657526 and ABIN2846548) western blot analysis in mouse liver tissue lysates (35 µg/lane). This demonstrates the PDZD4 antibody detected the PDZD4 protein (arrow).



### Western Blotting

**Image 2.** PDZD4 Antibody (N-term) (ABIN657526 and ABIN2846548) western blot analysis in uterine tumor cell line lysates (35 µg/lane). This demonstrates the PDZD4 antibody detected the PDZD4 protein (arrow).