



[Go to Product page](#)

Datasheet for ABIN657536
anti-NKD1 antibody (N-Term)

1 Image

Overview

Quantity:	400 µL
Target:	NKD1
Binding Specificity:	AA 83-111, N-Term
Reactivity:	Mouse
Host:	Rabbit
Clonality:	Polyclonal
Application:	Western Blotting (WB)

Product Details

Immunogen:	This NKD1 antibody is generated from rabbits immunized with a KLH conjugated synthetic peptide between 83-111 amino acids from the N-terminal region of human NKD1.
Clone:	RB33082
Isotype:	Ig Fraction
Purification:	This antibody is purified through a protein A column, followed by peptide affinity purification.

Target Details

Target:	NKD1
Alternative Name:	NKD1 (NKD1 Products)
Background:	In the mouse, Nkd is a Dishevelled (see DVL1, MIM 601365)-binding protein that functions as a negative regulator of the Wnt (see WNT1, MIM 164820)-beta-catenin (see MIM 116806)-Tcf (see MIM 602272) signaling pathway.

Target Details

Molecular Weight:	52285
Gene ID:	85407
NCBI Accession:	NP_149110
UniProt:	Q969G9

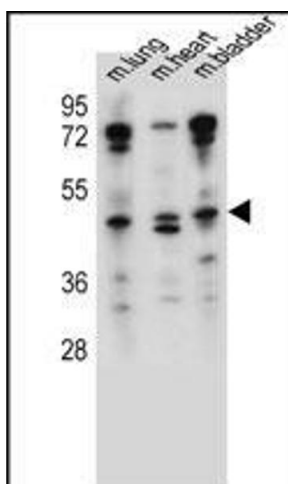
Application Details

Application Notes:	WB: 1:1000
Restrictions:	For Research Use only

Handling

Format:	Liquid
Buffer:	Purified polyclonal antibody supplied in PBS with 0.09 % (W/V) sodium azide.
Preservative:	Sodium azide
Precaution of Use:	This product contains Sodium azide: a POISONOUS AND HAZARDOUS SUBSTANCE which should be handled by trained staff only.
Storage:	4 °C,-20 °C
Storage Comment:	NKD1 Antibody (N-term) can be refrigerated at 2-8 °C for up to 6 months. For long term storage, place the at -20 °C.
Expiry Date:	6 months

Images



Western Blotting

Image 1. NKD1 Antibody (N-term) (ABIN657536 and ABIN2846554) western blot analysis in mouse lung, heart, bladder tissue lysates (35 µg/lane). This demonstrates the NKD1 antibody detected the NKD1 protein (arrow).