

Datasheet for ABIN657562
anti-Midline 2 antibody (C-Term)

2 Images

[Go to Product page](#)

Overview

Quantity:	400 µL
Target:	Midline 2 (MID2)
Binding Specificity:	AA 690-717, C-Term
Reactivity:	Human
Host:	Rabbit
Clonality:	Polyclonal
Application:	Western Blotting (WB), Immunohistochemistry (Paraffin-embedded Sections) (IHC (p))

Product Details

Immunogen:	This MID2 antibody is generated from rabbits immunized with a KLH conjugated synthetic peptide between 690-717 amino acids from the C-terminal region of human MID2.
Clone:	RB33238
Isotype:	IgG
Predicted Reactivity:	M
Purification:	This antibody is purified through a protein A column, followed by peptide affinity purification.

Target Details

Target:	Midline 2 (MID2)
Alternative Name:	MID2 (MID2 Products)
Background:	The protein encoded by this gene is a member of the tripartite motif (TRIM) family. The TRIM

Target Details

motif includes three zinc-binding domains, a RING, a B-box type 1 and a B-box type 2, and a coiled-coil region. The protein localizes to microtubular structures in the cytoplasm. Alternate splicing of this gene results in two transcript variants encoding different isoforms.

Molecular Weight: 83210

Gene ID: 11043

NCBI Accession: [NP_036348](#), [NP_438112](#)

UniProt: [Q9UJV3](#)

Application Details

Application Notes: WB: 1:1000. IHC-P: 1:10~50

Restrictions: For Research Use only

Handling

Format: Liquid

Buffer: Purified polyclonal antibody supplied in PBS with 0.09 % (W/V) sodium azide.

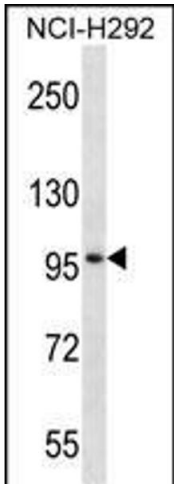
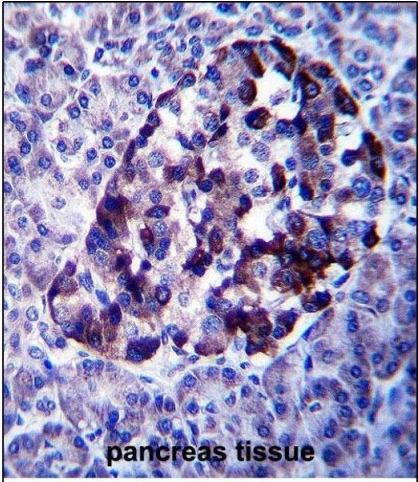
Preservative: Sodium azide

Precaution of Use: This product contains Sodium azide: a POISONOUS AND HAZARDOUS SUBSTANCE which should be handled by trained staff only.

Storage: 4 °C, -20 °C

Storage Comment: MID2 Antibody (C-term) can be refrigerated at 2-8 °C for up to 6 months. For long term storage, place the at -20 °C.

Expiry Date: 6 months



Immunohistochemistry (Paraffin-embedded Sections)

Image 1. MID2 Antibody (C-term) (ABIN657562 and ABIN2846569) immunohistochemistry analysis in formalin fixed and paraffin embedded human pancreas tissue followed by peroxidase conjugation of the secondary antibody and DAB staining. This data demonstrates the use of MID2 Antibody (C-term) for immunohistochemistry. Clinical relevance has not been evaluated.

Western Blotting

Image 2. MID2 Antibody (C-term) (ABIN657562 and ABIN2846569) western blot analysis in NCI- cell line lysates (35 µg/lane). This demonstrates the MID2 antibody detected the MID2 protein (arrow).