



[Go to Product page](#)

Datasheet for ABIN657576  
**anti-ZCCHC14 antibody (AA 420-449)**

2 Images

### Overview

|                      |                       |
|----------------------|-----------------------|
| Quantity:            | 400 µL                |
| Target:              | ZCCHC14               |
| Binding Specificity: | AA 420-449            |
| Reactivity:          | Mouse, Human          |
| Host:                | Rabbit                |
| Clonality:           | Polyclonal            |
| Application:         | Western Blotting (WB) |

### Product Details

|               |   |
|---------------|---|
| Immunogen:    | This ZCCHC14 antibody is generated from rabbits immunized with a KLH conjugated synthetic peptide between 420-449 amino acids from the Central region of human ZCCHC14. |
| Clone:        | RB33325   |
| Isotype:      | Ig Fraction   |
| Purification: | This antibody is purified through a protein A column, followed by peptide affinity purification.  |

### Target Details

|                   |   |
|-------------------|---|
| Target:           | ZCCHC14                                       |
| Alternative Name: | ZCCHC14 ( <a href="#">ZCCHC14 Products</a> )  |
| Background:       | The function of this protein remains unknown. |
| Molecular Weight: | 100042  |

## Target Details

Gene ID: 23174

NCBI Accession: [NP\\_055959](#)

UniProt: [Q8WYQ9](#)

## Application Details

Application Notes: WB: 1:1000. WB: 1:1000

Restrictions: For Research Use only

## Handling

Format: Liquid

Buffer: Purified polyclonal antibody supplied in PBS with 0.09 % (W/V) sodium azide.

Preservative: Sodium azide

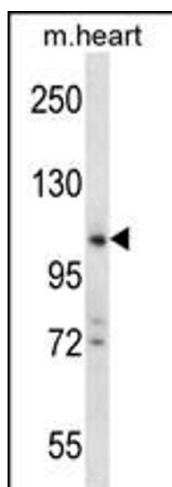
Precaution of Use: This product contains Sodium azide: a POISONOUS AND HAZARDOUS SUBSTANCE which should be handled by trained staff only.

Storage: 4 °C, -20 °C

Storage Comment: ZCCHC14 Antibody (Center) can be refrigerated at 2-8 °C for up to 6 months. For long term storage, place the at -20 °C.

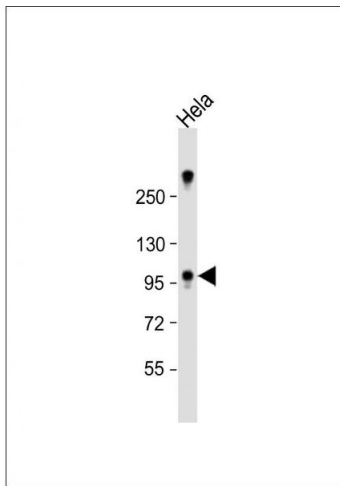
Expiry Date: 6 months

## Images



### Western Blotting

**Image 1.** ZCCHC14 Antibody (Center) (ABIN657576 and ABIN2846580) western blot analysis in mouse heart tissue lysates (35 µg/lane). This demonstrates the ZCCHC14 antibody detected the ZCCHC14 protein (arrow).



### Western Blotting

**Image 2.** Anti-ZCCHC14 Antibody (Center) at 1:1000 dilution + HeLa whole cell lysate Lysates/proteins at 20 µg per lane. Secondary Goat Anti-Rabbit IgG, (H+L), Peroxidase conjugated at 1/10000 dilution. Predicted band size : 100 kDa Blocking/Dilution buffer: 5 % NFDN/TBST.