

Datasheet for ABIN657578
anti-EXOC6B antibody (C-Term)[Go to Product page](#)

1 Image

Overview

Quantity:	400 µL
Target:	EXOC6B
Binding Specificity:	AA 767-796, C-Term
Reactivity:	Mouse
Host:	Rabbit
Clonality:	Polyclonal
Application:	Western Blotting (WB)

Product Details

Immunogen:	This EXOC6B antibody is generated from rabbits immunized with a KLH conjugated synthetic peptide between 767-796 amino acids from the C-terminal region of human EXOC6B.
Clone:	RB33343
Isotype:	Ig Fraction
Purification:	This antibody is purified through a protein A column, followed by peptide affinity purification.

Target Details

Target:	EXOC6B
Alternative Name:	EXOC6B (EXOC6B Products)
Background:	In yeast and rat, Sec15 is part of a multiprotein complex that is required for targeted exocytosis.
Molecular Weight:	94201

Target Details

Gene ID:	23233
NCBI Accession:	NP_056004
UniProt:	Q9Y2D4

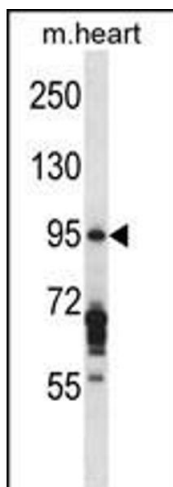
Application Details

Application Notes:	WB: 1:1000
Restrictions:	For Research Use only

Handling

Format:	Liquid
Buffer:	Purified polyclonal antibody supplied in PBS with 0.09 % (W/V) sodium azide.
Preservative:	Sodium azide
Precaution of Use:	This product contains Sodium azide: a POISONOUS AND HAZARDOUS SUBSTANCE which should be handled by trained staff only.
Storage:	4 °C,-20 °C
Storage Comment:	EXOC6B Antibody (C-term) can be refrigerated at 2-8 °C for up to 6 months. For long term storage, place the at -20 °C.
Expiry Date:	6 months

Images



Western Blotting

Image 1. EXOC6B Antibody (C-term) (ABIN657578 and ABIN2846582) western blot analysis in mouse heart tissue lysates (35 µg/lane). This demonstrates the EXOC6B antibody detected the EXOC6B protein (arrow).