

Datasheet for ABIN657579
anti-DOLPP1 antibody (C-Term)[Go to Product page](#)

1 Image

Overview

| | |
|----------------------|-----------------------|
| Quantity: | 400 µL |
| Target: | DOLPP1 |
| Binding Specificity: | AA 207-236, C-Term |
| Reactivity: | Mouse |
| Host: | Rabbit |
| Clonality: | Polyclonal |
| Application: | Western Blotting (WB) |

Product Details

| | |
|---------------|--|
| Immunogen: | This DOLPP1 antibody is generated from rabbits immunized with a KLH conjugated synthetic peptide between 207-236 amino acids from the C-terminal region of human DOLPP1. |
| Clone: | RB33347 |
| Isotype: | Ig Fraction |
| Purification: | This antibody is purified through a protein A column, followed by peptide affinity purification. |

Target Details

| | |
|-------------------|---|
| Target: | DOLPP1 |
| Alternative Name: | DOLPP1 (DOLPP1 Products) |
| Background: | DOLPP1 is required for efficient N-glycosylation. Necessary for maintaining optimal levels of dolichol-linked oligosaccharides. Hydrolyzes dolichyl pyrophosphate at a very high rate and dolichyl monophosphate at a much lower rate. Does not act on phosphatidate (By similarity). |

Target Details

| | |
|-------------------|--|
| Molecular Weight: | 27031 |
| Gene ID: | 57171 |
| NCBI Accession: | NP_001129389 , NP_065171 |
| UniProt: | Q86YN1 |

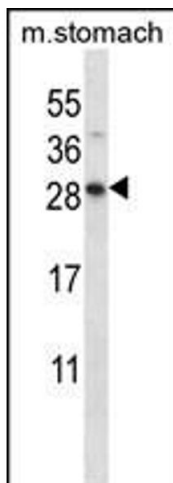
Application Details

| | |
|--------------------|-----------------------|
| Application Notes: | WB: 1:1000 |
| Restrictions: | For Research Use only |

Handling

| | |
|--------------------|--|
| Format: | Liquid |
| Buffer: | Purified polyclonal antibody supplied in PBS with 0.09 % (W/V) sodium azide. |
| Preservative: | Sodium azide |
| Precaution of Use: | This product contains Sodium azide: a POISONOUS AND HAZARDOUS SUBSTANCE which should be handled by trained staff only. |
| Storage: | 4 °C, -20 °C |
| Storage Comment: | DOLPP1 Antibody (C-term) can be refrigerated at 2-8 °C for up to 6 months. For long term storage, place the at -20 °C. |
| Expiry Date: | 6 months |

Images



Western Blotting

Image 1. DOL Antibody (C-term) (ABIN657579 and ABIN2846583) western blot analysis in mouse stomach tissue lysates (35 µg/lane). This demonstrates the DOL antibody detected the DOL protein (arrow).