



[Go to Product page](#)

Datasheet for ABIN657583

anti-PITPNM2 antibody (AA 639-668)

1 Image

Overview

Quantity:	400 µL
Target:	PITPNM2
Binding Specificity:	AA 639-668
Reactivity:	Human
Host:	Rabbit
Clonality:	Polyclonal
Application:	Western Blotting (WB)

Product Details

Immunogen:	This PITPNM2 antibody is generated from rabbits immunized with a KLH conjugated synthetic peptide between 639-668 amino acids from the Central region of human PITPNM2.
Clone:	RB33368
Isotype:	Ig Fraction
Purification:	This antibody is purified through a protein A column, followed by peptide affinity purification.

Target Details

Target:	PITPNM2
Alternative Name:	PITPNM2 (PITPNM2 Products)
Background:	PITPNM2 belongs to a family of membrane-associated phosphatidylinositol transfer domain-containing proteins that share homology with the Drosophila retinal degeneration B (rdgB) protein (Ocana et al., 2005 [PubMed 15627748]).

Target Details

Molecular Weight:	148933
Gene ID:	57605
NCBI Accession:	NP_065896
UniProt:	Q9BZ72

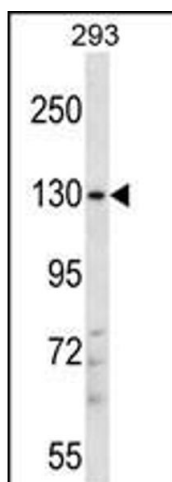
Application Details

Application Notes:	WB: 1:1000
Restrictions:	For Research Use only

Handling

Format:	Liquid
Buffer:	Purified polyclonal antibody supplied in PBS with 0.09 % (W/V) sodium azide.
Preservative:	Sodium azide
Precaution of Use:	This product contains Sodium azide: a POISONOUS AND HAZARDOUS SUBSTANCE which should be handled by trained staff only.
Storage:	4 °C, -20 °C
Storage Comment:	PITPNM2 Antibody (Center) can be refrigerated at 2-8 °C for up to 6 months. For long term storage, place the at -20 °C.
Expiry Date:	6 months

Images



Western Blotting

Image 1. PITPNM2 Antibody (Center) (ABIN657583 and ABIN2846586) western blot analysis in 293 cell line lysates (35 µg/lane). This demonstrates the PITPNM2 antibody detected the PITPNM2 protein (arrow).