



[Go to Product page](#)

Datasheet for ABIN657591

anti-BTF3L4 antibody (C-Term)

1 Image

Overview

Quantity:	400 µL
Target:	BTF3L4
Binding Specificity:	AA 111-140, C-Term
Reactivity:	Human
Host:	Rabbit
Clonality:	Polyclonal
Application:	Western Blotting (WB)

Product Details

Immunogen:	This BTF3L4 antibody is generated from rabbits immunized with a KLH conjugated synthetic peptide between 111-140 amino acids from the C-terminal region of human BTF3L4.
Clone:	RB33438
Isotype:	Ig Fraction
Predicted Reactivity:	M
Purification:	This antibody is purified through a protein A column, followed by peptide affinity purification.

Target Details

Target:	BTF3L4
Alternative Name:	BTF3L4 (BTF3L4 Products)
Background:	The function of this protein remains unknown.

Target Details

Molecular Weight:	17271
Gene ID:	91408
NCBI Accession:	NP_001129969 , NP_001230696 , NP_689478
UniProt:	Q96K17

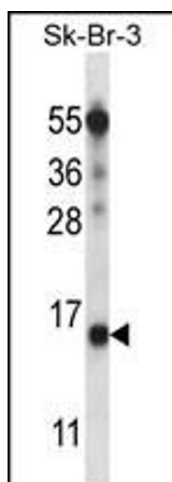
Application Details

Application Notes:	WB: 1:1000
Restrictions:	For Research Use only

Handling

Format:	Liquid
Buffer:	Purified polyclonal antibody supplied in PBS with 0.09 % (W/V) sodium azide.
Preservative:	Sodium azide
Precaution of Use:	This product contains Sodium azide: a POISONOUS AND HAZARDOUS SUBSTANCE which should be handled by trained staff only.
Storage:	4 °C, -20 °C
Storage Comment:	BTF3L4 Antibody (C-term) can be refrigerated at 2-8 °C for up to 6 months. For long term storage, place the at -20 °C.
Expiry Date:	6 months

Images



Western Blotting

Image 1. BTF3L4 Antibody (C-term) (ABIN657591 and ABIN2846592) western blot analysis in SK-BR-3 cell line lysates (35 µg/lane). This demonstrates the BTF3L4 antibody detected the BTF3L4 protein (arrow).