

Datasheet for ABIN657599

anti-PPP1R3F antibody (C-Term)**3** Images[Go to Product page](#)

Overview

Quantity:	400 µL
Target:	PPP1R3F
Binding Specificity:	AA 549-578, C-Term
Reactivity:	Human
Host:	Rabbit
Clonality:	Polyclonal
Conjugate:	This PPP1R3F antibody is un-conjugated
Application:	Western Blotting (WB), Immunohistochemistry (Paraffin-embedded Sections) (IHC (p))

Product Details

Immunogen:	This PPP1R3F antibody is generated from rabbits immunized with a KLH conjugated synthetic peptide between 549-578 amino acids from the C-terminal region of human PPP1R3F.
Clone:	RB33482
Isotype:	Ig Fraction
Predicted Reactivity:	M
Purification:	This antibody is purified through a protein A column, followed by peptide affinity purification.

Target Details

Target:	PPP1R3F
Alternative Name:	PPP1R3F (PPP1R3F Products)

Target Details

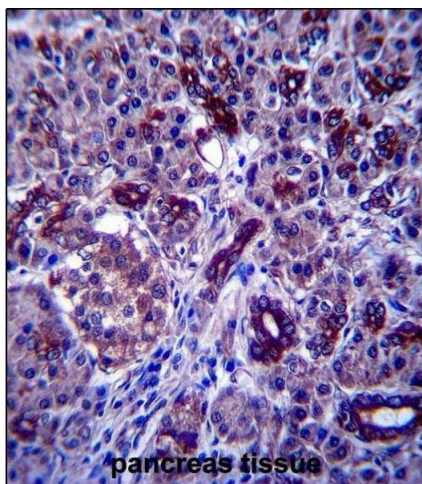
Background:	This gene encodes a protein that has been identified as one of several type-1 protein phosphatase (PP1) regulatory subunits. One or two of these subunits, together with the well-conserved catalytic subunit, can form the PP1 holoenzyme, where the regulatory subunit functions to regulate substrate specificity and/or targeting to a particular cellular compartment. Alternative splicing results in multiple transcript variants.
Molecular Weight:	82798
Gene ID:	89801
NCBI Accession:	NP_001171674 , NP_149992
UniProt:	Q6ZSY5
Pathways:	Regulation of Carbohydrate Metabolic Process

Application Details

Application Notes:	WB: 1:1000. WB: 1:1000. IHC-P: 1:10~50
Restrictions:	For Research Use only

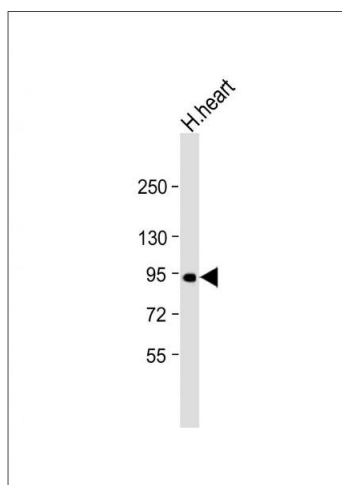
Handling

Format:	Liquid
Buffer:	Purified polyclonal antibody supplied in PBS with 0.09 % (W/V) sodium azide.
Preservative:	Sodium azide
Precaution of Use:	This product contains Sodium azide: a POISONOUS AND HAZARDOUS SUBSTANCE which should be handled by trained staff only.
Storage:	4 °C, -20 °C
Storage Comment:	PPP1R3F Antibody (C-term) can be refrigerated at 2-8 °C for up to 6 months. For long term storage, place the at -20 °C.
Expiry Date:	6 months



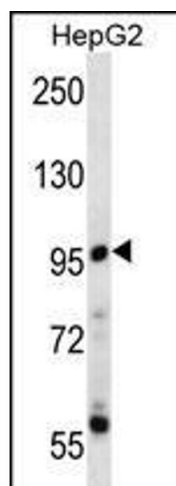
Immunohistochemistry (Paraffin-embedded Sections)

Image 1. P1R3F Antibody (C-term) (ABIN657599 and ABIN2846598) immunohistochemistry analysis in formalin fixed and paraffin embedded human pancreas tissue followed by peroxidase conjugation of the secondary antibody and DAB staining. This data demonstrates the use of P1R3F Antibody (C-term) for immunohistochemistry. Clinical relevance has not been evaluated.



Western Blotting

Image 2. Anti-P1R3F Antibody (C-term) at 1:1000 dilution + human heart lysate. Lysates/proteins at 20 µg per lane. Secondary Goat Anti-Rabbit IgG, (H+L), Peroxidase conjugated at 1/10000 dilution. Predicted band size : 83 kDa. Blocking/Dilution buffer: 5 % NFDM/TBST.



Western Blotting

Image 3. P1R3F Antibody (C-term) (ABIN657599 and ABIN2846598) western blot analysis in HepG2 cell line lysates (35 µg/lane). This demonstrates the P1R3F antibody detected the P1R3F protein (arrow).