



[Go to Product page](#)

Datasheet for ABIN657603

anti-KIAA1274 antibody (C-Term)

2 Images

Overview

Quantity:	400 µL
Target:	KIAA1274 (PALD1)
Binding Specificity:	AA 810-839, C-Term
Reactivity:	Human
Host:	Rabbit
Clonality:	Polyclonal
Application:	Western Blotting (WB), Immunohistochemistry (Paraffin-embedded Sections) (IHC (p))

Product Details

Immunogen:	This KIAA1274 antibody is generated from rabbits immunized with a KLH conjugated synthetic peptide between 810-839 amino acids from the C-terminal region of human KIAA1274.
Clone:	RB33510
Isotype:	Ig Fraction
Purification:	This antibody is purified through a protein A column, followed by peptide affinity purification.

Target Details

Target:	KIAA1274 (PALD1)
Alternative Name:	KIAA1274 (PALD1 Products)
Background:	The function of this protein remains unknown.
Molecular Weight:	96754

Target Details

Gene ID: 27143

NCBI Accession: [NP_055246](#)

UniProt: [Q9ULE6](#)

Application Details

Application Notes: WB: 1:1000. IHC-P: 1:10~50

Restrictions: For Research Use only

Handling

Format: Liquid

Buffer: Purified polyclonal antibody supplied in PBS with 0.09 % (W/V) sodium azide.

Preservative: Sodium azide

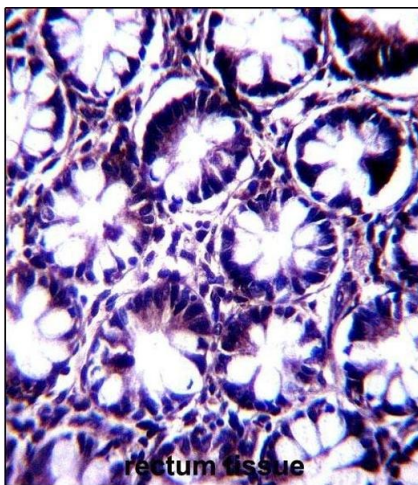
Precaution of Use: This product contains Sodium azide: a POISONOUS AND HAZARDOUS SUBSTANCE which should be handled by trained staff only.

Storage: 4 °C,-20 °C

Storage Comment: KIAA1274 Antibody (C-term) can be refrigerated at 2-8 °C for up to 6 months. For long term storage, place the at -20 °C.

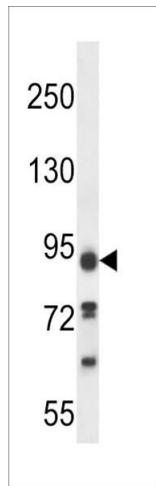
Expiry Date: 6 months

Images



Immunohistochemistry (Paraffin-embedded Sections)

Image 1. KI Antibody (C-term) (ABIN657603 and ABIN2846601) immunohistochemistry analysis in formalin fixed and paraffin embedded human rectum tissue followed by peroxidase conjugation of the secondary antibody and DAB staining. This data demonstrates the use of KI Antibody (C-term) for immunohistochemistry. Clinical relevance has not been evaluated.



Western Blotting

Image 2. KI Antibody (C-term) (ABIN657603 and ABIN2846601) western blot analysis in 293 cell line lysates (35 µg/lane). This demonstrates the KI antibody detected the KI protein (arrow).