



[Go to Product page](#)

Datasheet for ABIN657610

anti-GSG1-Like antibody (C-Term)

2 Images

Overview

Quantity:	400 µL
Target:	GSG1-Like (GSG1L)
Binding Specificity:	AA 232-261, C-Term
Reactivity:	Human
Host:	Rabbit
Clonality:	Polyclonal
Conjugate:	This GSG1-Like antibody is un-conjugated
Application:	Western Blotting (WB), Immunohistochemistry (Paraffin-embedded Sections) (IHC (p))

Product Details

Immunogen:	This GSG1L antibody is generated from rabbits immunized with a KLH conjugated synthetic peptide between 232-261 amino acids from the C-terminal region of human GSG1L.
Clone:	RB33583
Isotype:	Ig Fraction
Predicted Reactivity:	M, Rat
Purification:	This antibody is purified through a protein A column, followed by peptide affinity purification.

Target Details

Target:	GSG1-Like (GSG1L)
Alternative Name:	GSG1L (GSG1L Products)

Target Details

Background: The function of this protein remains unknown.

Molecular Weight: 36774

Gene ID: 146395

NCBI Accession: [NP_001103233](#), [NP_653276](#)

UniProt: [Q6UXU4](#)

Application Details

Application Notes: WB: 1:1000. IHC-P: 1:10~50

Restrictions: For Research Use only

Handling

Format: Liquid

Buffer: Purified polyclonal antibody supplied in PBS with 0.09 % (W/V) sodium azide.

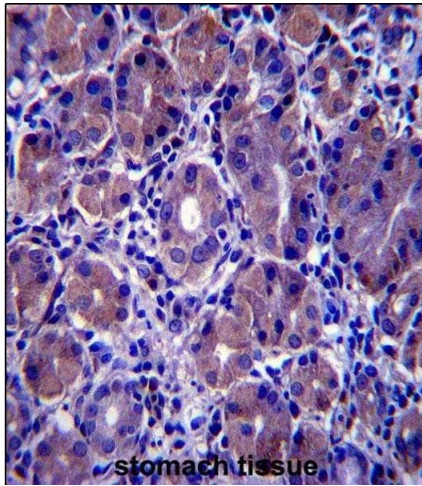
Preservative: Sodium azide

Precaution of Use: This product contains Sodium azide: a POISONOUS AND HAZARDOUS SUBSTANCE which should be handled by trained staff only.

Storage: 4 °C,-20 °C

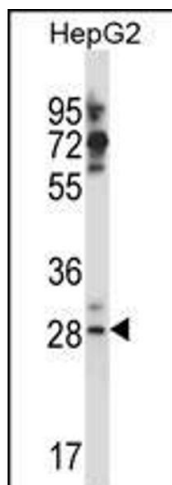
Storage Comment: GSG1L Antibody (C-term) can be refrigerated at 2-8 °C for up to 6 months. For long term storage, place the at -20 °C.

Expiry Date: 6 months



Immunohistochemistry (Paraffin-embedded Sections)

Image 1. GSG1L Antibody (C-term) (ABIN657610 and ABIN2846607) immunohistochemistry analysis in formalin fixed and paraffin embedded human stomach tissue followed by peroxidase conjugation of the secondary antibody and DAB staining. This data demonstrates the use of GSG1L Antibody (C-term) for immunohistochemistry. Clinical relevance has not been evaluated.



Western Blotting

Image 2. GSG1L Antibody (C-term) (ABIN657610 and ABIN2846607) western blot analysis in HepG2 cell line lysates (35 µg/lane). This demonstrates the GSG1L antibody detected the GSG1L protein (arrow).