

Datasheet for ABIN657616
anti-MMP2 antibody (AA 303-331)



[Go to Product page](#)

2 Images

3 Publications

Overview

Quantity:	400 µL
Target:	MMP2
Binding Specificity:	AA 303-331
Reactivity:	Human
Host:	Rabbit
Clonality:	Polyclonal
Conjugate:	This MMP2 antibody is un-conjugated
Application:	Western Blotting (WB)

Product Details

Immunogen:	This MMP2 antibody is generated from rabbits immunized with a KLH conjugated synthetic peptide between 303-331 amino acids from the Central region of human MMP2.
Clone:	RB33605
Isotype:	Ig Fraction
Predicted Reactivity:	C, M, Rb, Rat
Purification:	This antibody is purified through a protein A column, followed by peptide affinity purification.

Target Details

Target:	MMP2
Alternative Name:	MMP2 (MMP2 Products)

Target Details

Background: Proteins of the matrix metalloproteinase (MMP) family are involved in the breakdown of extracellular matrix in normal physiological processes, such as embryonic development, reproduction, and tissue remodeling, as well as in disease processes, such as arthritis and metastasis. Most MMP's are secreted as inactive proproteins which are activated when cleaved by extracellular proteinases. This gene encodes an enzyme which degrades type IV collagen, the major structural component of basement membranes. The enzyme plays a role in endometrial menstrual breakdown, regulation of vascularization and the inflammatory response. Mutations in this gene have been associated with Winchester syndrome and Nodulosis-Arthropathy-Osteolysis (NAO) syndrome. Two transcript variants encoding different isoforms have been found for this gene.

Molecular Weight: 73882

Gene ID: 4313

NCBI Accession: [NP_001121363](#), [NP_004521](#)

UniProt: [P08253](#)

Pathways: [Activation of Innate immune Response](#)

Application Details

Application Notes: WB: 1:1000. WB: 1:1000

Restrictions: For Research Use only

Handling

Format: Liquid

Buffer: Purified polyclonal antibody supplied in PBS with 0.09 % (W/V) sodium azide.

Preservative: Sodium azide

Precaution of Use: This product contains Sodium azide: a POISONOUS AND HAZARDOUS SUBSTANCE which should be handled by trained staff only.

Storage: 4 °C,-20 °C

Storage Comment: MMP2 Antibody (Center) can be refrigerated at 2-8 °C for up to 6 months. For long term storage, place the at -20 °C.

Expiry Date: 6 months

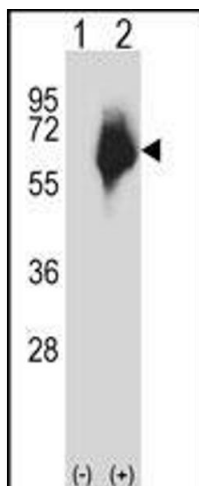
Product cited in:

Chen, Liu, Gao, Hui, Yang, Zhang, Xu, Tian, Fan: "Preliminary evaluation for Bit1 as a potential biomarker for squamous cell carcinoma and adenocarcinoma of esophagus." in: **Tumour biology**, Vol. 39, Issue 5, pp. 1010428317708270, (2017) ([PubMed](#)).

Dai, Duan, Duan, Zhou, He, Tu, Shen: "Down-regulation of TCF21 by hypermethylation induces cell proliferation, migration and invasion in colorectal cancer." in: **Biochemical and biophysical research communications**, (2015) ([PubMed](#)).

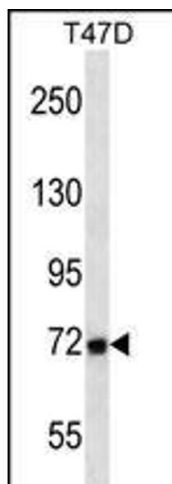
Shi, Shang, Pan, Wang, Jiang, Hao, Zhang, Cai, Xu, Zhan, Wang: "Calreticulin promotes migration and invasion of esophageal cancer cells by upregulating neuropilin-1 expression via STAT5A." in: **Clinical cancer research : an official journal of the American Association for Cancer Research**, Vol. 20, Issue 23, pp. 6153-62, (2014) ([PubMed](#)).

Images



Western Blotting

Image 1. Western blot analysis of P2 (arrow) using rabbit polyclonal P2 Antibody (Center) (ABIN657616 and ABIN2846612). 293 cell lysates (2 µg/lane) either nontransfected (Lane 1) or transiently transfected (Lane 2) with the P2 gene.



Western Blotting

Image 2. P2 Antibody (Center) (ABIN657616 and ABIN2846612) western blot analysis in T47D cell line lysates (35 µg/lane). This demonstrates the P2 antibody detected the P2 protein (arrow).