

Datasheet for ABIN657617  
**anti-TLR2 antibody (AA 281-310)**[Go to Product page](#)

## 1 Image

## Overview

Quantity:	400 µL
Target:	TLR2
Binding Specificity:	AA 281-310
Reactivity:	Human
Host:	Rabbit
Clonality:	Polyclonal
Application:	Western Blotting (WB)

## Product Details

Immunogen:	This TLR2 antibody is generated from rabbits immunized with a KLH conjugated synthetic peptide between 281-310 amino acids from the Central region of human TLR2.
Clone:	RB33608
Isotype:	Ig Fraction
Purification:	This antibody is purified through a protein A column, followed by peptide affinity purification.

## Target Details

Target:	TLR2
Alternative Name:	TLR2 ( <a href="#">TLR2 Products</a> )
Background:	The protein encoded by this gene is a member of the Toll-like receptor (TLR) family which plays a fundamental role in pathogen recognition and activation of innate immunity. TLRs are highly conserved from Drosophila to humans and share structural and functional similarities. They

## Target Details

recognize pathogen-associated molecular patterns (PAMPs) that are expressed on infectious agents, and mediate the production of cytokines necessary for the development of effective immunity. The various TLRs exhibit different patterns of expression. This gene is expressed most abundantly in peripheral blood leukocytes, and mediates host response to Gram-positive bacteria and yeast via stimulation of NF-kappaB.

Molecular Weight: 89838

Gene ID: 7097

NCBI Accession: [NP\\_003255](#)

UniProt: [O60603](#)

Pathways: [TLR Signaling](#), [Activation of Innate immune Response](#), [Cellular Response to Molecule of Bacterial Origin](#), [Positive Regulation of Immune Effector Process](#), [Production of Molecular Mediator of Immune Response](#), [Toll-Like Receptors Cascades](#)

## Application Details

Application Notes: WB: 1:1000

Restrictions: For Research Use only

## Handling

Format: Liquid

Buffer: Purified polyclonal antibody supplied in PBS with 0.09 % (W/V) sodium azide.

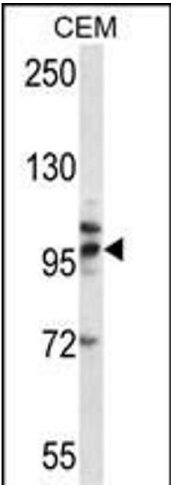
Preservative: Sodium azide

Precaution of Use: This product contains Sodium azide: a POISONOUS AND HAZARDOUS SUBSTANCE which should be handled by trained staff only.

Storage: 4 °C,-20 °C

Storage Comment: TLR2 Antibody (Center) can be refrigerated at 2-8 °C for up to 6 months. For long term storage, place the at -20 °C.

Expiry Date: 6 months



Western Blotting

**Image 1.** TLR2 Antibody (Center) (ABIN657617 and ABIN2846613) western blot analysis in CEM cell line lysates (35 µg/lane). This demonstrates the TLR2 antibody detected the TLR2 protein (arrow).