

Datasheet for ABIN657621

anti-CD235b/GYPB antibody (AA 22-51)[Go to Product page](#)**2** Images

Overview

Quantity:	400 µL
Target:	CD235b/GYPB (GYPB)
Binding Specificity:	AA 22-51
Reactivity:	Human
Host:	Rabbit
Clonality:	Polyclonal
Conjugate:	This CD235b/GYPB antibody is un-conjugated
Application:	Western Blotting (WB), Immunohistochemistry (Paraffin-embedded Sections) (IHC (p))

Product Details

Immunogen:	This GYPB antibody is generated from rabbits immunized with a KLH conjugated synthetic peptide between 22-51 amino acids from the Central region of human GYPB.
Clone:	RB33617
Isotype:	Ig Fraction
Purification:	This antibody is purified through a protein A column, followed by peptide affinity purification.

Target Details

Target:	CD235b/GYPB (GYPB)
Alternative Name:	GYPB (GYPB Products)
Background:	This protein is a minor sialoglycoprotein in erythrocyte membranes.

Target Details

Molecular Weight:	9782
Gene ID:	2994
NCBI Accession:	NP_002091
UniProt:	P06028

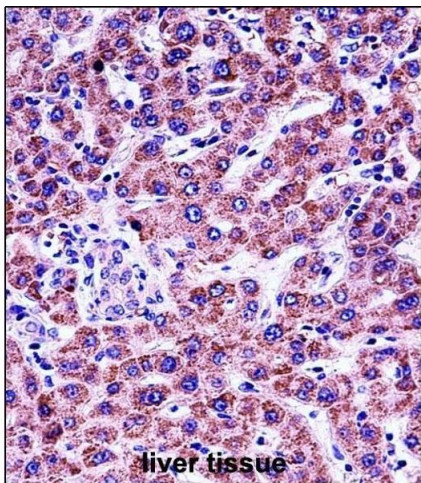
Application Details

Application Notes:	WB: 1:1000. IHC-P: 1:10~50
Restrictions:	For Research Use only

Handling

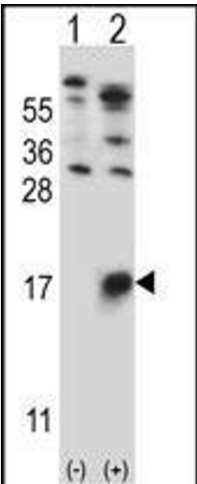
Format:	Liquid
Buffer:	Purified polyclonal antibody supplied in PBS with 0.09 % (W/V) sodium azide.
Preservative:	Sodium azide
Precaution of Use:	This product contains Sodium azide: a POISONOUS AND HAZARDOUS SUBSTANCE which should be handled by trained staff only.
Storage:	4 °C,-20 °C
Storage Comment:	GYPB Antibody (Center) can be refrigerated at 2-8 °C for up to 6 months. For long term storage, place the at -20 °C.
Expiry Date:	6 months

Images



Immunohistochemistry (Paraffin-embedded Sections)

Image 1. GYPB Antibody (Center) (ABIN657621 and ABIN2846617) immunohistochemistry analysis in formalin fixed and paraffin embedded human liver tissue followed by peroxidase conjugation of the secondary antibody and DAB staining. This data demonstrates the use of GYPB Antibody (Center) for immunohistochemistry. Clinical relevance has not been evaluated.



Western Blotting

Image 2. Western blot analysis of GYPB (arrow) using rabbit polyclonal GYPB Antibody (Center) (ABIN657621 and ABIN2846617). 293 cell lysates (2 µg/lane) either nontransfected (Lane 1) or transiently transfected (Lane 2) with the GYPB gene.