

Datasheet for ABIN657622  
**anti-PYGB antibody (N-Term)**[Go to Product page](#)

## 1 Image

## Overview

Quantity:	400 µL
Target:	PYGB (GPBB)
Binding Specificity:	AA 1-30, N-Term
Reactivity:	Mouse
Host:	Rabbit
Clonality:	Polyclonal
Application:	Western Blotting (WB)

## Product Details

Immunogen:	This PYGB antibody is generated from rabbits immunized with a KLH conjugated synthetic peptide between 1-30 amino acids from the N-terminal region of human PYGB.
Clone:	RB33623
Isotype:	Ig Fraction
Purification:	This antibody is purified through a protein A column, followed by peptide affinity purification.

## Target Details

Target:	PYGB (GPBB)
Alternative Name:	PYGB ( <a href="#">GPBB Products</a> )
Background:	The protein encoded by this gene is a glycogen phosphorylase found predominantly in the brain. The encoded protein forms homodimers which can associate into homotetramers, the enzymatically active form of glycogen phosphorylase. The activity of this enzyme is positively

## Target Details

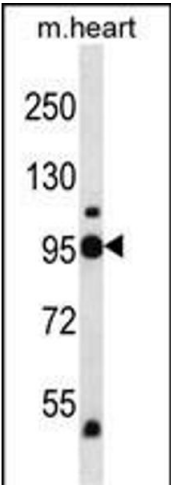
	regulated by AMP and negatively regulated by ATP, ADP, and glucose-6-phosphate. This enzyme catalyzes the rate-determining step in glycogen degradation.
Molecular Weight:	96696
Gene ID:	5834
NCBI Accession:	<a href="#">NP_002853</a>
UniProt:	<a href="#">P11216</a>
Pathways:	<a href="#">Cellular Glucan Metabolic Process</a>

## Application Details

Application Notes:	WB: 1:1000
Restrictions:	For Research Use only

## Handling

Format:	Liquid
Buffer:	Purified polyclonal antibody supplied in PBS with 0.09 % (W/V) sodium azide.
Preservative:	Sodium azide
Precaution of Use:	This product contains Sodium azide: a POISONOUS AND HAZARDOUS SUBSTANCE which should be handled by trained staff only.
Storage:	4 °C, -20 °C
Storage Comment:	PYGB Antibody (N-term) can be refrigerated at 2-8 °C for up to 6 months. For long term storage, place the at -20 °C.
Expiry Date:	6 months



Western Blotting

**Image 1.** PYGB Antibody (N-term) (ABIN657622 and ABIN2846618) western blot analysis in mouse heart tissue lysates (35 µg/lane). This demonstrates the PYGB antibody detected the PYGB protein (arrow).