



[Go to Product page](#)

Datasheet for ABIN657629

## anti-MMP13 antibody (AA 253-282)

### 3 Images

#### Overview

Quantity:	400 µL
Target:	MMP13
Binding Specificity:	AA 253-282
Reactivity:	Human
Host:	Rabbit
Clonality:	Polyclonal
Conjugate:	This MMP13 antibody is un-conjugated
Application:	Western Blotting (WB), Immunofluorescence (IF), Immunohistochemistry (Paraffin-embedded Sections) (IHC (p))

#### Product Details

Immunogen:	This MMP13 antibody is generated from rabbits immunized with a KLH conjugated synthetic peptide between 253-282 amino acids from the Central region of human MMP13.
Clone:	RB33646
Isotype:	Ig Fraction
Predicted Reactivity:	Hs, Rb
Purification:	This antibody is purified through a protein A column, followed by peptide affinity purification.

#### Target Details

Target:	MMP13
---------	-------

## Target Details

---

Alternative Name:	MMP13 ( <a href="#">MMP13 Products</a> )
Background:	Proteins of the matrix metalloproteinase (MMP) family are involved in the breakdown of extracellular matrix in normal physiological processes, such as embryonic development, reproduction, and tissue remodeling, as well as in disease processes, such as arthritis and metastasis. Most MMP's are secreted as inactive proproteins which are activated when cleaved by extracellular proteinases. The protein encoded by this gene cleaves type II collagen more efficiently than types I and III. It may be involved in articular cartilage turnover and cartilage pathophysiology associated with osteoarthritis. The gene is part of a cluster of MMP genes which localize to chromosome 11q22.3.
Molecular Weight:	53820
Gene ID:	4322
NCBI Accession:	<a href="#">NP_002418</a>
UniProt:	<a href="#">P45452</a>

## Application Details

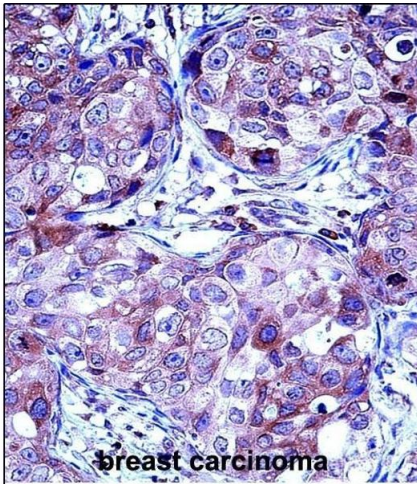
---

Application Notes:	IF: 1:10~50. WB: 1:1000. IHC-P: 1:10~50
Restrictions:	For Research Use only

## Handling

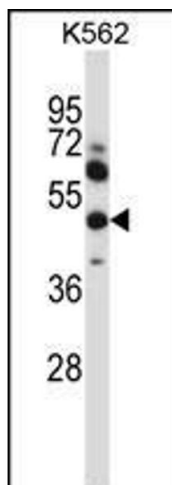
---

Format:	Liquid
Buffer:	Purified polyclonal antibody supplied in PBS with 0.09 % (W/V) sodium azide.
Preservative:	Sodium azide
Precaution of Use:	This product contains Sodium azide: a POISONOUS AND HAZARDOUS SUBSTANCE which should be handled by trained staff only.
Storage:	4 °C,-20 °C
Storage Comment:	MMP13 Antibody (Center) can be refrigerated at 2-8 °C for up to 6 months. For long term storage, place the at -20 °C.
Expiry Date:	6 months



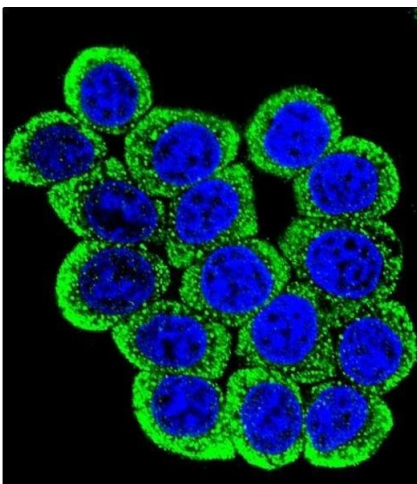
### Immunohistochemistry (Paraffin-embedded Sections)

**Image 1.** P13 Antibody (Center) (ABIN657629 and ABIN2846625) immunohistochemistry analysis in formalin fixed and paraffin embedded human breast carcinoma followed by peroxidase conjugation of the secondary antibody and DAB staining. This data demonstrates the use of P13 Antibody (Center) for immunohistochemistry. Clinical relevance has not been evaluated.



### Western Blotting

**Image 2.** P13 Antibody (Center) (ABIN657629 and ABIN2846625) western blot analysis in K562 cell line lysates (35 µg/lane). This demonstrates the P13 antibody detected the P13 protein (arrow).



### Immunofluorescence

**Image 3.** Confocal immunofluorescent analysis of P13 Antibody (Center) (ABIN657629 and ABIN2846625) with HeLa cell followed by Alexa Fluor 488-conjugated goat anti-rabbit IgG (green). DAPI was used to stain the cell nuclear (blue).