

Datasheet for ABIN657636
anti-MMP16 antibody (C-Term)[Go to Product page](#)

2 Images

2 Publications

Overview

Quantity:	400 µL
Target:	MMP16
Binding Specificity:	AA 519-548, C-Term
Reactivity:	Human
Host:	Rabbit
Clonality:	Polyclonal
Application:	Western Blotting (WB), Immunohistochemistry (Paraffin-embedded Sections) (IHC (p))

Product Details

Immunogen:	This MMP16 antibody is generated from rabbits immunized with a KLH conjugated synthetic peptide between 519-548 amino acids from the C-terminal region of human MMP16.
Clone:	RB33657
Isotype:	Ig Fraction
Purification:	This antibody is purified through a protein A column, followed by peptide affinity purification.

Target Details

Target:	MMP16
Alternative Name:	MMP16 (MMP16 Products)
Background:	Endopeptidase that degrades various components of the extracellular matrix, such as collagen type III and fibronectin. Activates progelatinase A. Involved in the matrix remodeling of blood vessels. Isoform short cleaves fibronectin and also collagen type III, but at lower rate. It has no

Target Details

	effect on type I, II, IV and V collagen. However, upon interaction with CSPG4, it may be involved in degradation and invasion of type I collagen by melanoma cells.
Molecular Weight:	69521
Gene ID:	4325
NCBI Accession:	NP_005932
UniProt:	P51512

Application Details

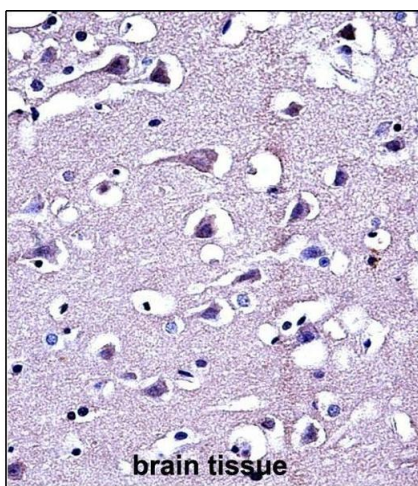
Application Notes:	WB: 1:1000. IHC-P: 1:10~50
Restrictions:	For Research Use only

Handling

Format:	Liquid
Buffer:	Purified polyclonal antibody supplied in PBS with 0.09 % (W/V) sodium azide.
Preservative:	Sodium azide
Precaution of Use:	This product contains Sodium azide: a POISONOUS AND HAZARDOUS SUBSTANCE which should be handled by trained staff only.
Storage:	4 °C,-20 °C
Storage Comment:	MMP16 Antibody (C-term) can be refrigerated at 2-8 °C for up to 6 months. For long term storage, place the at -20 °C.
Expiry Date:	6 months

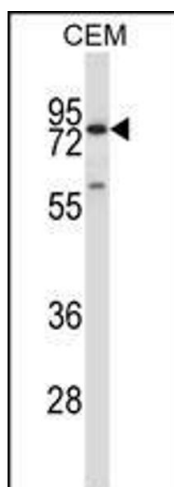
Publications

Product cited in:	Wu, Ma, Shan, Zhou, Li: "High expression of matrix metalloproteinases 16 is associated with the aggressive malignant behavior and poor survival outcome in colorectal carcinoma." in: Scientific reports , Vol. 7, pp. 46531, (2017) (PubMed).
	Shen, Wang, Yu, Zhang, Qin: "MMP16 promotes tumor metastasis and indicates poor prognosis in hepatocellular carcinoma." in: Oncotarget , Vol. 8, Issue 42, pp. 72197-72204, (2017) (PubMed).



Immunohistochemistry (Paraffin-embedded Sections)

Image 1. P16 Antibody (C-term) (ABIN657636 and ABIN2846632) immunohistochemistry analysis in formalin fixed and paraffin embedded human brain tissue followed by peroxidase conjugation of the secondary antibody and DAB staining. This data demonstrates the use of P16 Antibody (C-term) for immunohistochemistry. Clinical relevance has not been evaluated.



Western Blotting

Image 2. P16 Antibody (C-term) (ABIN657636 and ABIN2846632) western blot analysis in CEM cell line lysates (35 µg/lane). This demonstrates the P16 antibody detected the P16 protein (arrow).